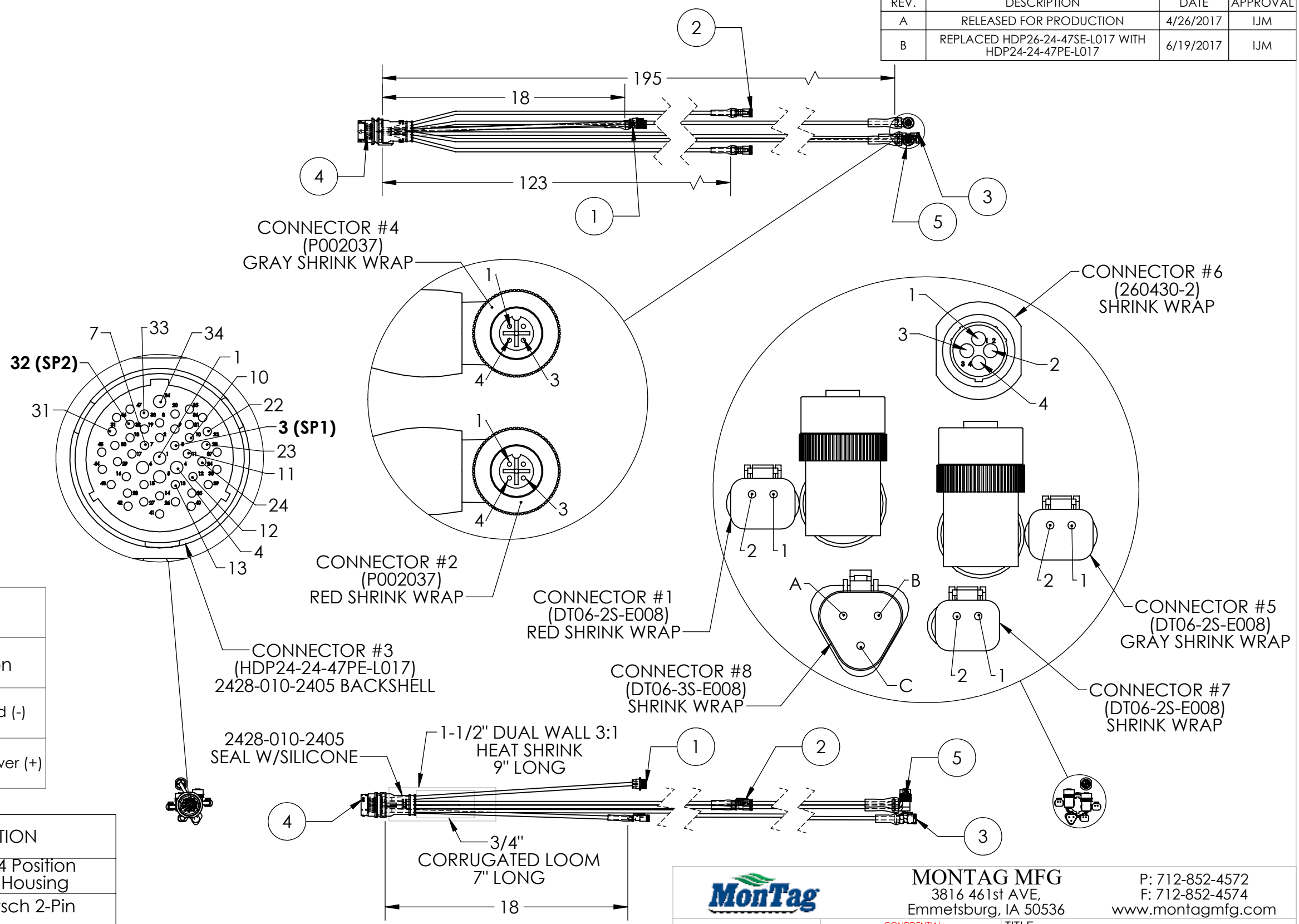


#3 BLACK	34	Scale Ex (-)	4	#6	
	11	Scale Signal (+)	3		
	10	Scale Signal (-)	2		
	22	Scale Ex (+)	1		
	1	PWM Common (-) Tank #1	2		#1 RED
	24	PWM Power (+) Tank #1	1		
	12	Encoder Signal Tank #1	4	#2 RED	
	3	Encoder Common (-) Tank #1	3		
	32	Encoder Power 12V(+) Tank #1	1		
	4	PWM Common (-) Tank #2	2	#5 GRAY	
23	PWM Power (+) Tank #2	1			
13	Encoder Signal Tank #2	4	#4 GRAY		
3	Encoder Common (-) Tank #2	3			
32	Encoder Power 12V(+) Tank #2	1			
33	Implement Height	2	#7		
31	Implement Height Switch Signal	1			
32	Fan Pressure Power 12V (+)	A	#8		
7	Fan Pressure Signal	B			
3	Fan Pressure Common (-)	C			

SPICES					
Splice ID	Connector	Connector	Connector	Connector	Description
SP1	3-3	2-3	4-3	8-C	Sensor Ground (-)
SP2	3-32	2-1	4-1	8-A	Sensor 12 V Power (+)

ITEM NO.	QTY.	PART NUMBER	DESCRIPTION
1	1	206430-2	TE Connectivity - 4 Position CPC Receptacle Housing
2	3	DT06-2S-E008	Connector - Deutsch 2-Pin Plug
3	1	DT06-3S-E008	Connector - Deutsch 3 Pin Plug
4	1	HDP24-24-47PE-L017	Connector - 47 pos. Circular Plastic Connector Receptacle
5	2	P002037	Connector - 5 Pin M12 90 Female Plug

REVISIONS			
REV.	DESCRIPTION	DATE	APPROVAL
A	RELEASED FOR PRODUCTION	4/26/2017	IJM
B	REPLACED HDP26-24-47SE-L017 WITH HDP24-24-47PE-L017	6/19/2017	IJM



NOTE: SHRINK WRAP ON ALL CONNECTORS EXEPT . USE GOLD PLATING ON ALL SOCKETS & PINS. LABEL W/ PART#, REV., AND DESCRIPTION.

MONTAG MFG
3816 461st AVE,
Emmetsburg, IA 50536

P: 712-852-4572
F: 712-852-4574
www.montagmfg.com

DO NOT SCALE DRAWING
UNLESS OTHERWISE SPECIFIED:
DIMENSIONS ARE IN INCHES

TOLERANCES ARE AS FOLLOWS:
FRACTIONAL ± 1/32
ANGULAR: ± 1
TWO PLACE DECIMAL ±.03
THREE PLACE DECIMAL ±.003

MATERIAL: N/A
FINISH: N/A

CONFIDENTIAL:
This drawing and design is proprietary and confidential to Montag Manufacturing, Inc.

NAME	DATE
DRAWN: SEC	04/18/17
APPROVED: SEC	03/15/18

COMMENTS:
18 GA. GXL WIRE

TITLE:
Harness - 47 Pin JDRC 2000 (Dual Product/Section) (12V Encoder)

SIZE	PART. NO.	REV
B	P002483	B-01

SCALE: 1:8 WEIGHT: 14.25 SHEET 1 OF 1