



PRE-SEASON CHECKUP

6-12 TON AUTO-STEER CARTS

TIE ROD CHECKUP

- Montag spec on new carts for looseness between arm and tire rim is $1/4" \pm 1/8"$. Montag recommends replacing the tie-rods if there is excessive tie-rod end play as this can impact cart stability and safety.
- To test your tie-rods, push against the tire (toward the cart frame) with a helper measuring from the tire rim to the cart arm. Push both ways and take the overall difference between the min and max values.



Figure 1: Heavy-duty (current) tie-rod design. Note hex nut on shaft to differentiate from lighter-duty design.

SERVICE KITS TO REPLACE WORN OUT HEAVY-DUTY TIE-RODS

PART NUMBER	CART TYPE	WHEELBASE
K003009	6-12 TON	120"-132"
K003010	6-12 TON	133"-165"
K003011	9-12 TON w/ TRACKS	N/A

- Montag upgraded the tie-rod design to a heavy-duty design in approximately 2012. If your cart has the old design (see below image), we recommend upgrading to the HD design, regardless of endplay (see kits below).



Figure 2: Old tie-rod design. If your tie-rod looks like this, Montag recommends replacing with HD design.

Figure 3 (Below): Detail view of end of heavy-duty (current) tie-rod.



UPGRADE KITS TO UPGRADE TO HD TIE-RODS

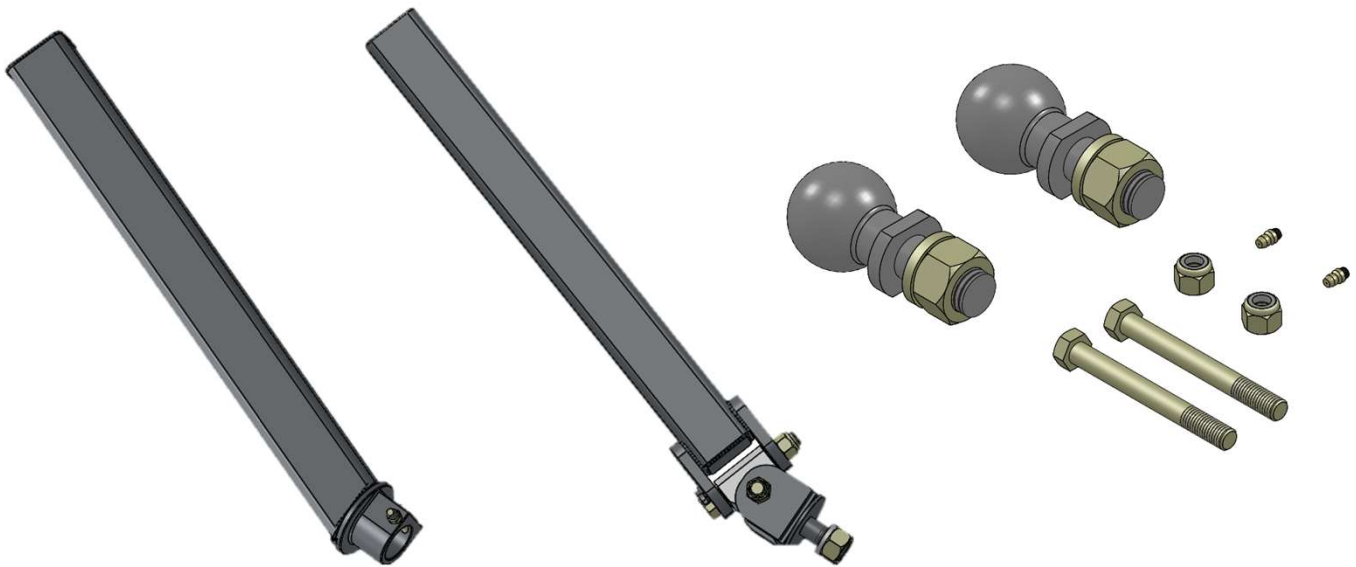
PART NUMBER	CART TYPE	WHEELBASE
K000107	6 TON	120"-132"
K000108	9 & 12 TON	120"-132"
K000116	6 TON	133"-165"
K000115	9 & 12 TON	133"-165"

FOR PRICING, SEE PRICE GUIDE OR ORDER FORM.

ALL PARTS IN THIS PRE-SEASON CHECKUP HAVE A 1 YEAR PARTS WARRANTY.

BALL HITCH

- Montag recommends using knuckle hitches as they have a greater range of motion and a more reliable connection than ball hitches.
- Check to see if there is any irregular movement in the hitch when cart's direction of movement is changing.
- If hitch balls are wearing out and becoming loose, purchase a K003012 to replace balls and hardware.
- If the hitch socket (in A000034AA) is wearing, purchase (2X) A000034AA hitches to replace them or consider upgrading to knuckle hitches.
- To upgrade from an adjustable ball hitch to a knuckle hitch, purchase (2X) of the A000020AA knuckle assemblies below. Montag also recommends purchasing an A002438AA knuckle transport receiver if the customer is planning on disconnecting the cart from the toolbar and towing it.
- See P002285 (u-bolt) and P000061 (nut) for hitch tube mounting hardware.
- Customer is responsible for servicing worn components.



A000034AA

HITCH – ADJUSTABLE BALL

A000020AA

HITCH – KNUCKLE ASSEMBLY

K003012

KIT – BALL HITCH SERVICE



A000017AA

HITCH – BALL TRANSPORT RECEIVER

A002438AA

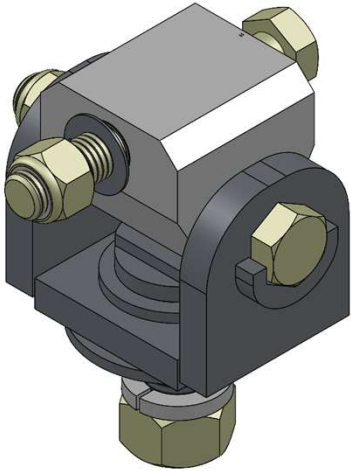
HITCH – KNUCKLE TRANSPORT RECEIVER

FOR PRICING, SEE PRICE GUIDE OR ORDER FORM.

ALL PARTS IN THIS PRE-SEASON CHECKUP HAVE A 1 YEAR PARTS WARRANTY.

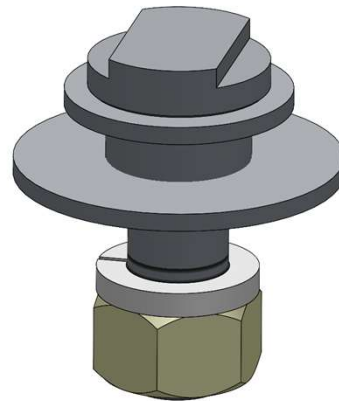
KNUCKLE HITCH

- Check to see if there is any irregular movement in the knuckle when cart's direction of movement is changing.
- Replace components that are worn.
- All kits below are to rebuild 1 knuckle only. Purchase 2 kits to rebuild 2 knuckle hitch assemblies.
- Purchase (2X) A000020AA assemblies to replace the entire knuckle hitch (see next page).
- Customer is responsible for servicing worn components.



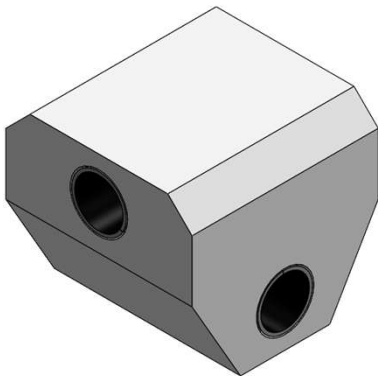
K002467AA

KIT – REPLACEMENT KNUCKLE
(LESS 4" X 4" TUBE)



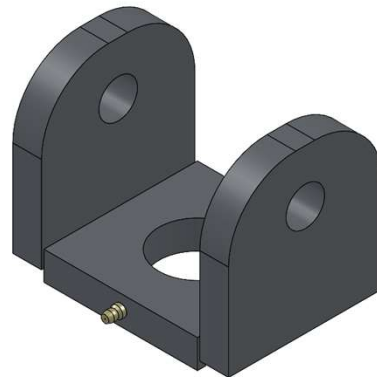
K002853AA

KIT – REPLACEMENT KNUCKLE
PIVOT BOLT & HARDWARE



A002455AA

KIT – KNUCKLE HITCH HOUSING
W/ BUSHINGS



A002456AA

KIT – KNUCKLE HOUSING PIVOT
W/ ZERK

DRIFT-ASSIST HITCH

- Montag has a Drift-Assist option for the 6-12 ton auto-steer carts to allow the user to compensate for drift due to side hill slippage.
- The Drift-Assist option includes a hydraulic-powered arm that uses an SCV valve to control manually.
- It requires a knuckle hitch on the non-powered arm.
- There is an option for a sensed cylinder.
- Montag does not supply the hydraulics or electronics to control either the sensed or non-sensed cylinders.

DRIFT-ASSIST HITCH OPTIONS	
PART NUMBER	DESCRIPTION
A000020AA	HITCH – KNUCKLE ASSEMBLY (STANDARD)
A000282AA	HITCH – DRIFT-ASSIST POWERED ARM (NON-SENSORED)
A002100AA	HITCH – DRIFT-ASSIST POWERED ARM (SENSORED)



FOR PRICING, SEE PRICE GUIDE OR ORDER FORM.
ALL PARTS IN THIS PRE-SEASON CHECKUP HAVE A 1 YEAR PARTS WARRANTY.

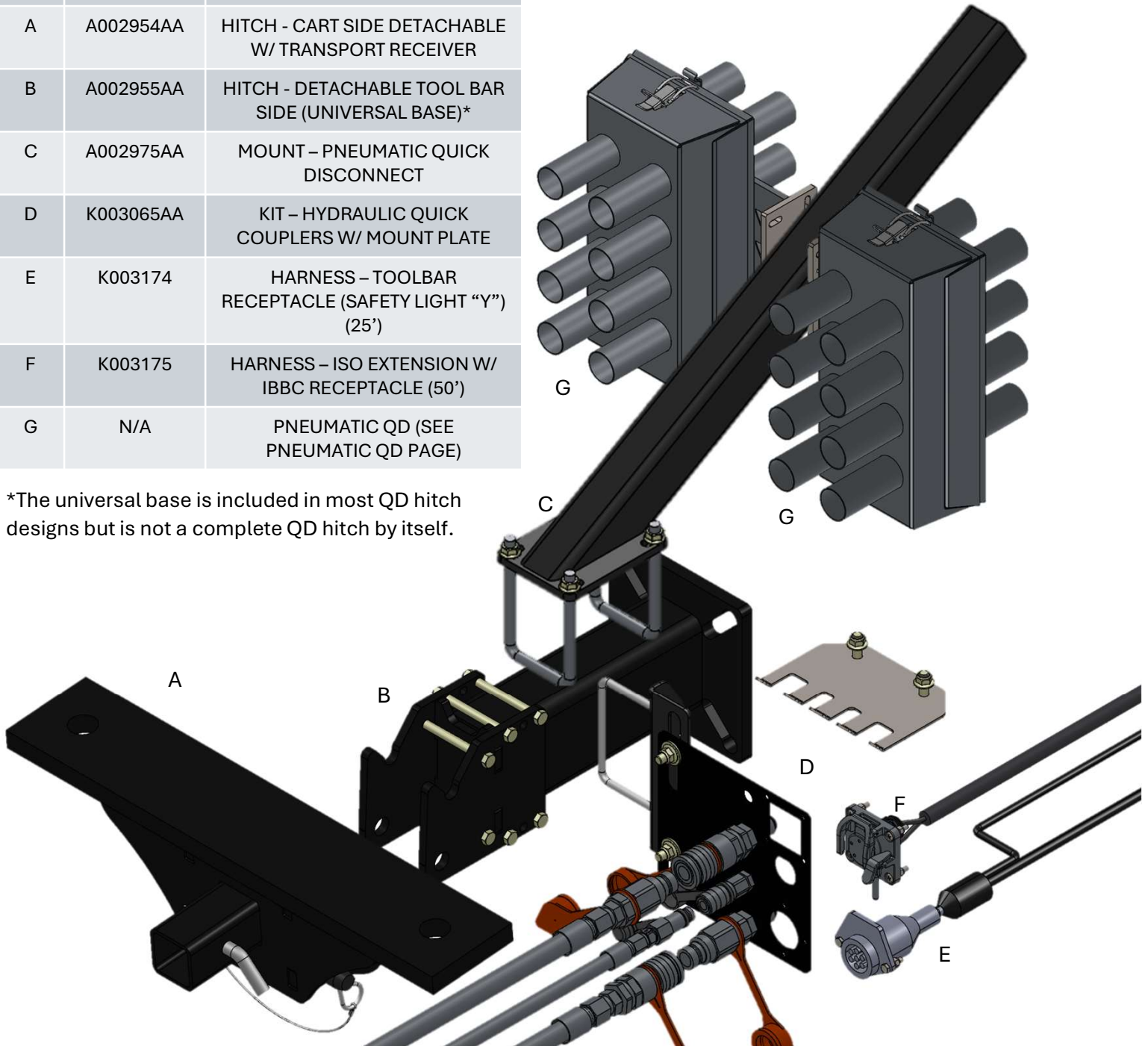
QUICK-DISCONNECT HITCH

- Montag has recently released some options for a quick-disconnect mechanical hitch for 6–12-ton carts.
- Montag also has quick-disconnect add-on options for hydraulic, pneumatic, and electrical systems.
- Montag currently has QD hitch offerings for John Deere 1770/1775/1780 planters.
 - Montag can investigate adding QD functionality to existing hitch designs upon request.

QUICK-DISCONNECT HITCH OPTIONS

ID	PART NUMBER	DESCRIPTION
A	A002954AA	HITCH - CART SIDE DETACHABLE W/ TRANSPORT RECEIVER
B	A002955AA	HITCH - DETACHABLE TOOL BAR SIDE (UNIVERSAL BASE)*
C	A002975AA	MOUNT - PNEUMATIC QUICK DISCONNECT
D	K003065AA	KIT - HYDRAULIC QUICK COUPLERS W/ MOUNT PLATE
E	K003174	HARNESS - TOOLBAR RECEPTACLE (SAFETY LIGHT "Y") (25')
F	K003175	HARNESS - ISO EXTENSION W/ IBBC RECEPTACLE (50')
G	N/A	PNEUMATIC QD (SEE PNEUMATIC QD PAGE)

*The universal base is included in most QD hitch designs but is not a complete QD hitch by itself.



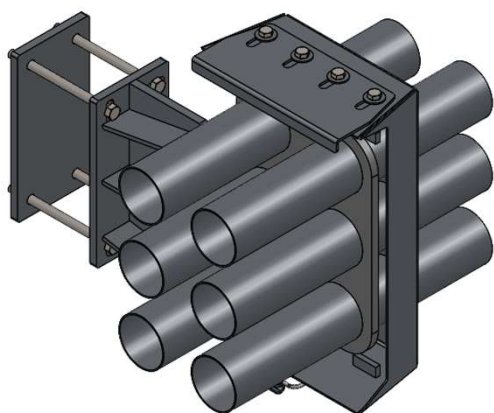
FOR PRICING, SEE PRICE GUIDE OR ORDER FORM.
ALL PARTS IN THIS PRE-SEASON CHECKUP HAVE A 1 YEAR PARTS WARRANTY.

PNEUMATIC QUICK-DISCONNECT

- Quick-disconnect's (QD's) allow the customer to quickly disconnect the cart from the toolbar while managing the hoses.
- This provides a point on the cart where all hoses are routed to. The QD is quickly unclamped to disconnect the cart from the toolbar.
- You can also switch implements by having multiple sets of QD's mounted on various implements.
- There are foam gaskets between the sides of the QD to seal air between the two sides. See chart for purchasing replacement foam gaskets.
- QD's are stainless-steel for corrosion-resistance.

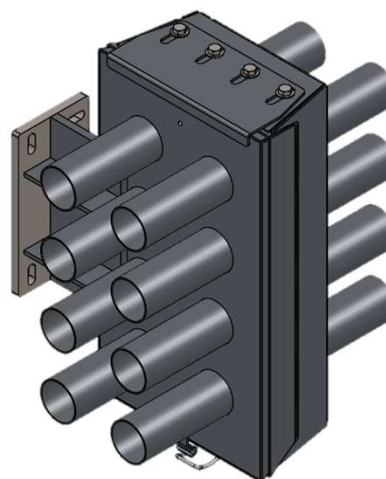
QUICK-DISCONNECT OPTIONS

	MOUNT SIDE	QD-600 (6 ROWS)		QD-800 (8 ROWS)		QD-900 (9 ROWS)
		2"	2.5"	2"	2.5"	2.5"
MOUNT HARDWARE	RIGHT-HAND	A000298	A000299	A000300	A000301	A002567
	LEFT-HAND	A000150	A000151	A000152	A000153	A002564
NO MOUNT HARDWARE	RIGHT-HAND	A002809	A002801	A002808	A002798	NONE
	LEFT-HAND	A002807	A002800	A002806	A002796	NONE



A000299

QD-600 - 2-1/2" COMPLETE SET (RIGHT)



A002808

QD-800 - 2" COMPLETE SET (RIGHT) (NO MOUNT
HARDWARE)

QUICK-DISCONNECT REPLACEMENT GASKETS

	2"	2.5"
QD-600	M000534	M000535
QD-800	M000758	M000759
QD-900	N/A	M003701

FOR PRICING, SEE PRICE GUIDE OR ORDER FORM.
ALL PARTS IN THIS PRE-SEASON CHECKUP HAVE A 1 YEAR PARTS WARRANTY.

KING PIN CHECKUP

- For model year 2022, Montag replaced the King Pin bolts with a machined shaft and harder bushings for a more robust and durable solution.
- Montag strongly recommends replacing the old arm bolts, especially on 9 and 12 ton carts.
- This is especially true if the cart operates in extreme terrain conditions.
- The retrofit kit has a bolted-on hex head on both sides of the shaft, so no welding is needed to install it.



K002765

KIT – 6 TON CART ARM KING PIN UPGRADE



K002720

KIT – 9 & 12 TON CART ARM KING PIN UPGRADE

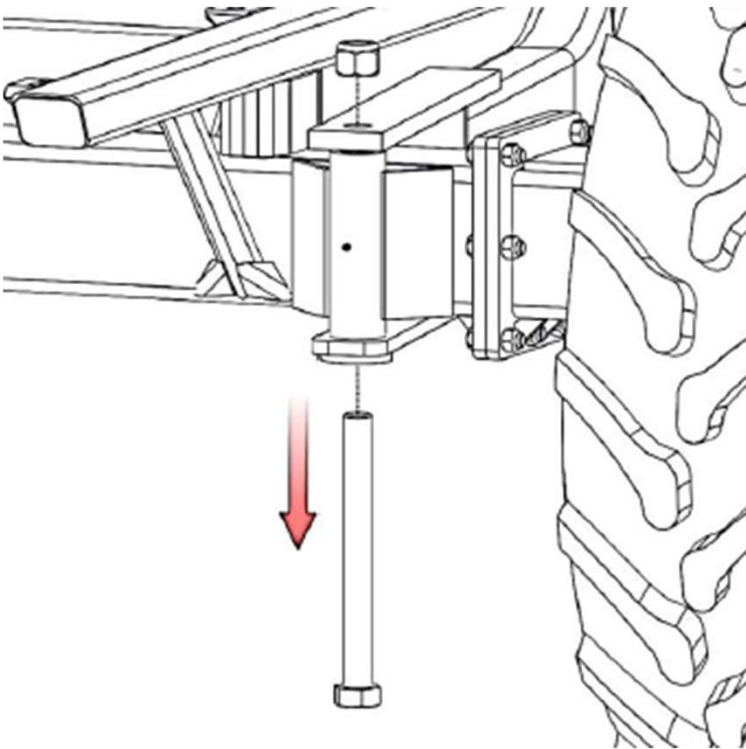


FIGURE 4: REMOVING OLD ARM BOLT/NUT (6 TON)

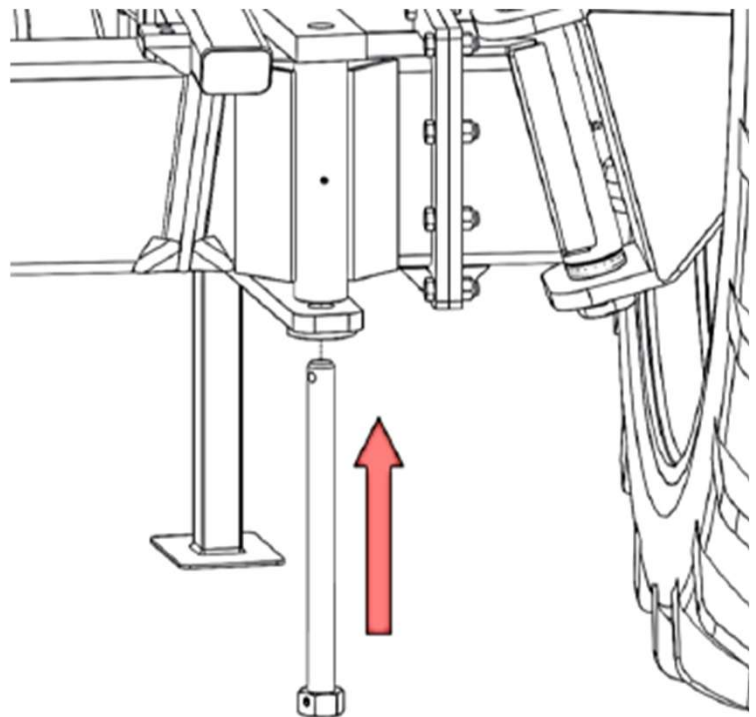


FIGURE 5: INSTALLING NEW SHAFT W/ RETAINERS (12 TON)

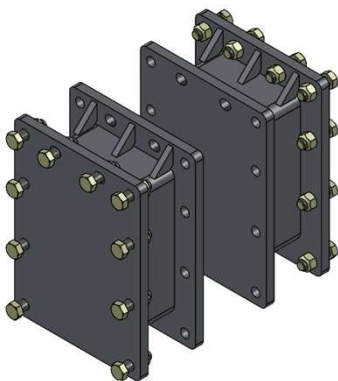
FOR PRICING, SEE PRICE GUIDE OR ORDER FORM.
ALL PARTS IN THIS PRE-SEASON CHECKUP HAVE A 1 YEAR PARTS WARRANTY.

WHEELBASE UPGRADE OPTIONS

- The 6-12 Ton cart has an adjustable wheelbase, which uses bolted-on axle extension weldments to extend the overall wheelbase of the cart.
- Wheelbase is measured between the centers of the tires at the ground but can vary slightly with different tire/rim/extension combinations.
- If changing from a wheelbase of 132" or less to 133" or greater, you will also need K000116 (6 Ton) or K000115 (9-12 Ton) to get an extended tie-rod, alongside the axle extension kit.
- If changing from a wheelbase of 133" or greater to 132" or less, you will also need K000107 (6 Ton) or K000108 (9-12 Ton) to get a shorter tie-rod, alongside the axle extension kit.
- If your cart has an axle extension and you want a 120" wheelbase, you can simply remove the extension.
- 120" Wheelbase not available with the following cart tire/machine combinations due to clearance issues:
 - 24.5" X 32" (Gen 1 or Gen 2)
 - 650/65 R38" (Gen 1)

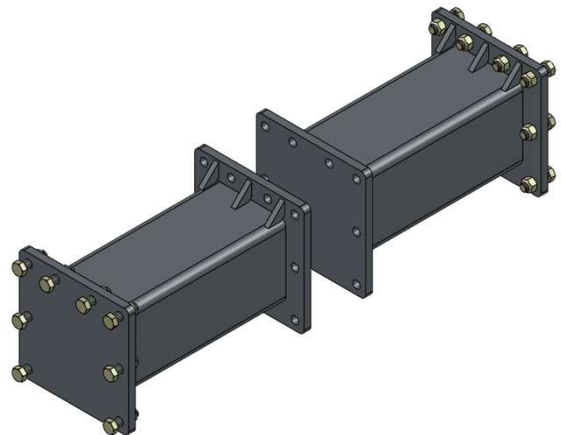
WHEELBASE EXTENSION UPGRADE KITS

PART NUMBER	DESCRIPTION	CART TYPE	NEW WB
NONE	REMOVE OLD EXTENSIONS. SEE NOTE	6-12 TON	120"
A000043AA	AXLE - 5" X 9/12 TON EXTENSION ASSEMBLY	9-12 TON	130"
A000039AA	AXLE - 6" X 6 TON EXTENSION ASSEMBLY	6 TON	132"
A000044AA	AXLE - 6" X 9/12 TON EXTENSION ASSEMBLY	9-12 TON	132"
A002478AA	AXLE - 7.5" X 9/12 TON EXTENSION ASSEMBLY	9-12 TON	135"
A002102AA	AXLE - 8" X 6 TON EXTENSION ASSEMBLY	6 TON	136"
A000278AA	AXLE - 8" X 9/12 TON EXTENSION ASSEMBLY	9-12 TON	136"
A000040AA	AXLE - 12" X 6 TON EXTENSION ASSEMBLY	6 TON	144"
A000045AA	AXLE - 12" X 9/12 TON EXTENSION ASSEMBLY	9-12 TON	144"
A000041AA	AXLE - 16" X 6 TON EXTENSION ASSEMBLY	6 TON	152"
A000046AA	AXLE - 16" X 9/12 TON EXTENSION ASSEMBLY	9-12 TON	152"
A000042AA	AXLE - 20" X 6 TON EXTENSION ASSEMBLY	6 TON	160"
A000047AA	AXLE - 20" X 9/12 TON EXTENSION ASSEMBLY	9-12 TON	160"



A000044AA

AXLE - 6" X 9/12 TON EXTENSION ASSEMBLY



A000042AA

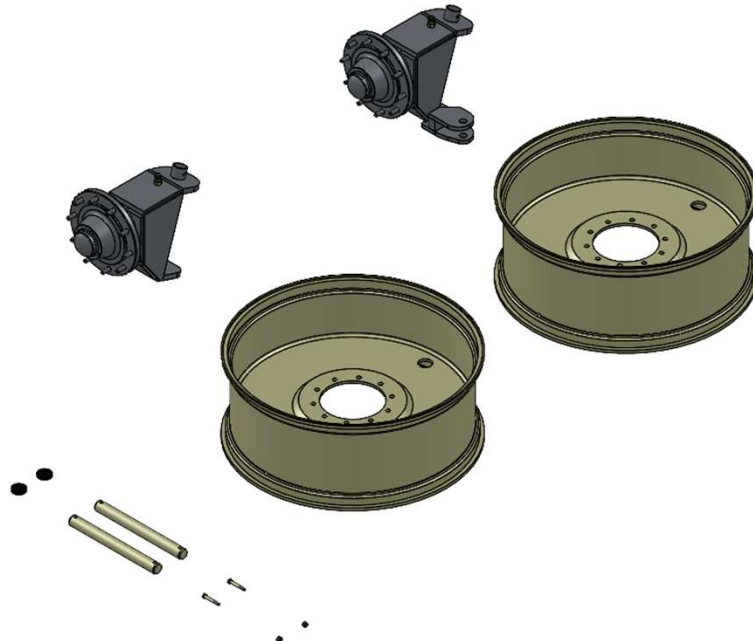
AXLE - 20" X 6 TON EXTENSION ASSEMBLY

FOR PRICING, SEE PRICE GUIDE OR ORDER FORM.

ALL PARTS IN THIS PRE-SEASON CHECKUP HAVE A 1 YEAR PARTS WARRANTY.

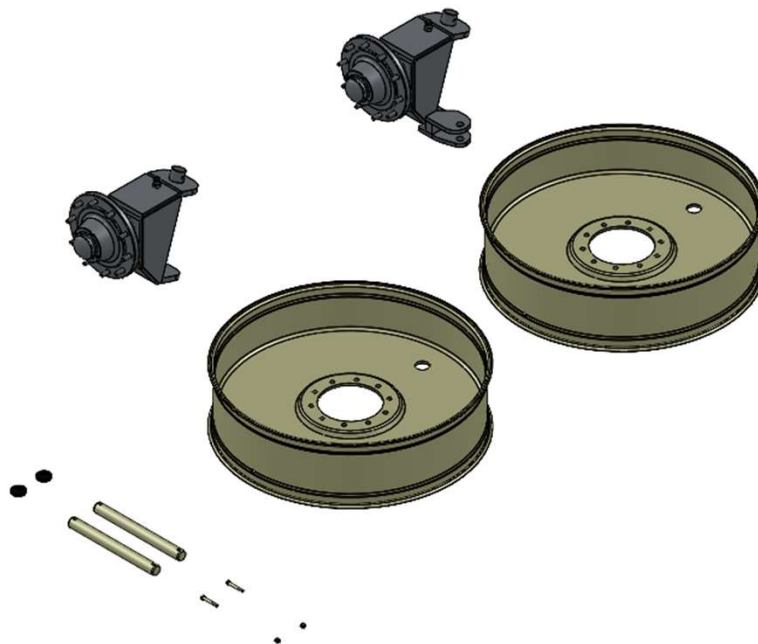
9 TO 12 TON CAPACITY UPGRADE

- Montag has discontinued the 9 ton auto-steer cart in favor of the 12 ton auto-steer cart.
- Customers with a 9 ton cart with either 480/80R42 or 380/80R46 tires can upgrade it to 12 tons of capacity.
- To upgrade, 12 ton spindles, rims, and king pins are required.
 - The main frame and arms do not change. Tires will need remounted on upgraded rims.
- 6 ton carts cannot be upgraded.
- Montag has also released a 20 Ton (not auto-steerable) cart option for larger (13-16 Ton) Gen 1 & Gen 2 machines, or for multiple smaller machines. Contact your local TM for more information.



K002679AA

KIT – 9 TO 12 TON UPGRADE (480/80R42)



K002680AA

KIT – 9 TO 12 TON UPGRADE (380/90R46)

FOR PRICING, SEE PRICE GUIDE OR ORDER FORM.
ALL PARTS IN THIS PRE-SEASON CHECKUP HAVE A 1 YEAR PARTS WARRANTY.

