

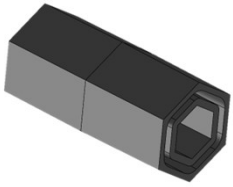


PRE-SEASON CHECKUP

GEN 2 2218 METERING SYSTEM

METER (GEN 2)

REPLACEMENT GEN 2 METER COMPONENTS	
PART #	DESCRIPTION
A002000	METER CARTRIDGE (20.5")
A002014	AIR CHAMBER – BOLT-ON
A002017	GEAR BOX – (22/7 RATIO)
A002023	AUGER – REPLACEMENT FOR A002000
A002025	METER CARTRIDGE (17.5")
A002026	AUGER – REPLACEMENT FOR A002025
A002055	ASSEMBLY – CARTRIDGE BLANK
A002187	ASSEMBLY – AIR CHAMBER BLANK
P000428	SCALE – FERTILIZER DENSITY
P002006	GASKET – CARTRIDGE MOUNTING
P002033 (1); K000151 (10)	COUPLER – SHEAR HEX
P002044	FLANGE – 2" QUICK CLAMP
P002047	GASKET – AIR CHAMBER MOUNTING
P002058	CLAMP – 2" QUICK
P002215	RETAINER – 3/8" E-CLIP



P002033
COUPLER – SHEAR
HEX



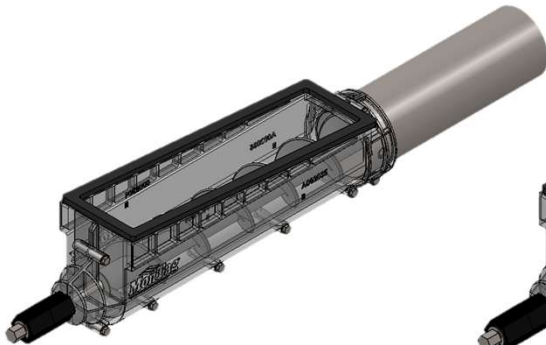
P002044
FLANGE – 2"
QUICK CLAMP



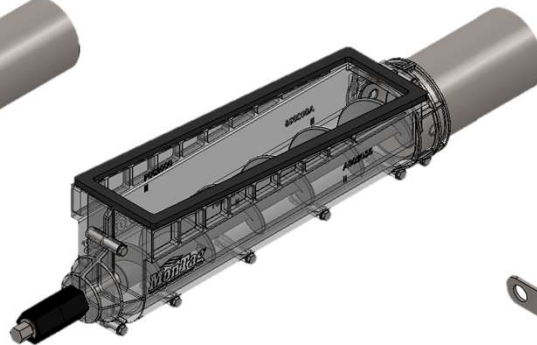
P002215
RETAINER – 3/8" E-
CLIP



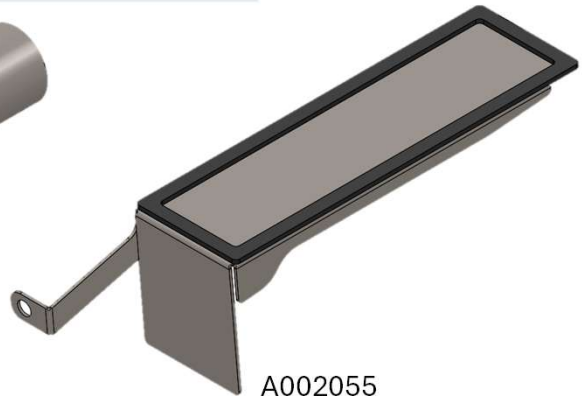
P002058
CLAMP – 2" QUICK



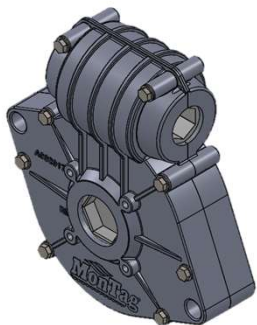
A002000
METER CARTRIDGE (20.5")



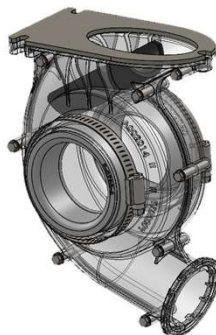
A002025
METER CARTRIDGE (17.5")



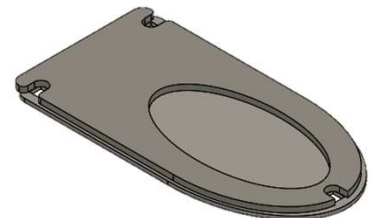
A002055
ASSEMBLY – CARTRIDGE BLANK



A002017
GEAR BOX (22/7 RATIO)



A002014
AIR CHAMBER – BOLT ON



A002187
ASSEMBLY – AIR CHAMBER BLANK

FOR PRICING, SEE PRICE GUIDE OR ORDER FORM.

UNLESS OTHERWISE NOTED, ALL PARTS IN THIS PRE-SEASON CHECKUP HAVE A 1 YEAR PARTS WARRANTY.

HYDRAULICS AND GLOBE MOUNT

HYDRAULIC DRIVE

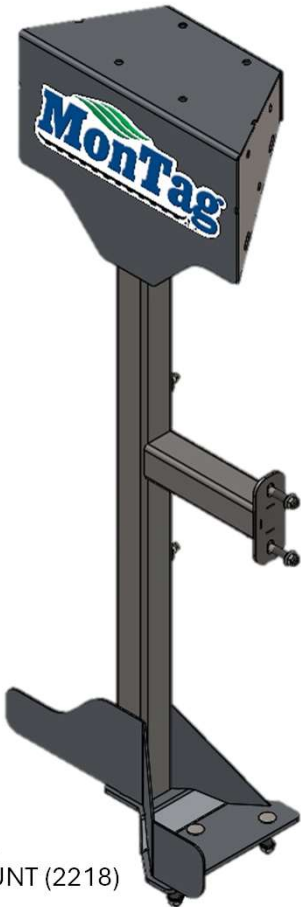
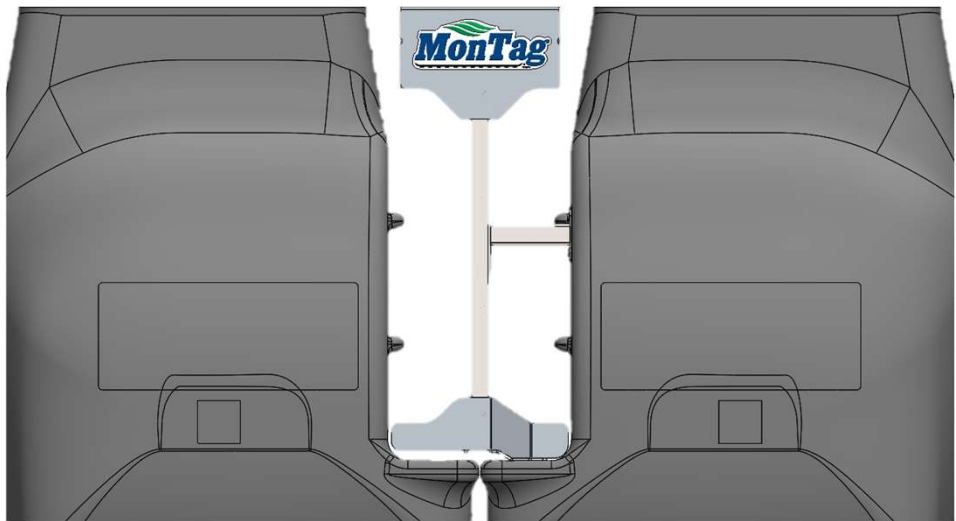
- Refer to the QR code below for looking up hydraulic motors and sensors for your Montag metering system.



GPS GLOBE MOUNT (IMPLEMENT GUIDANCE)

- For the John Deere implement guidance globe, Montag has developed a bolt-on mount for 2218 machines.
 - Replaces existing platform end stop on a 2218.
 - Will require drilling new holes and plugging existing holes in 2218 plastic tanks.

KIT	DESCRIPTION
A002961AA	KIT – GPS GLOBE MOUNT (2218)

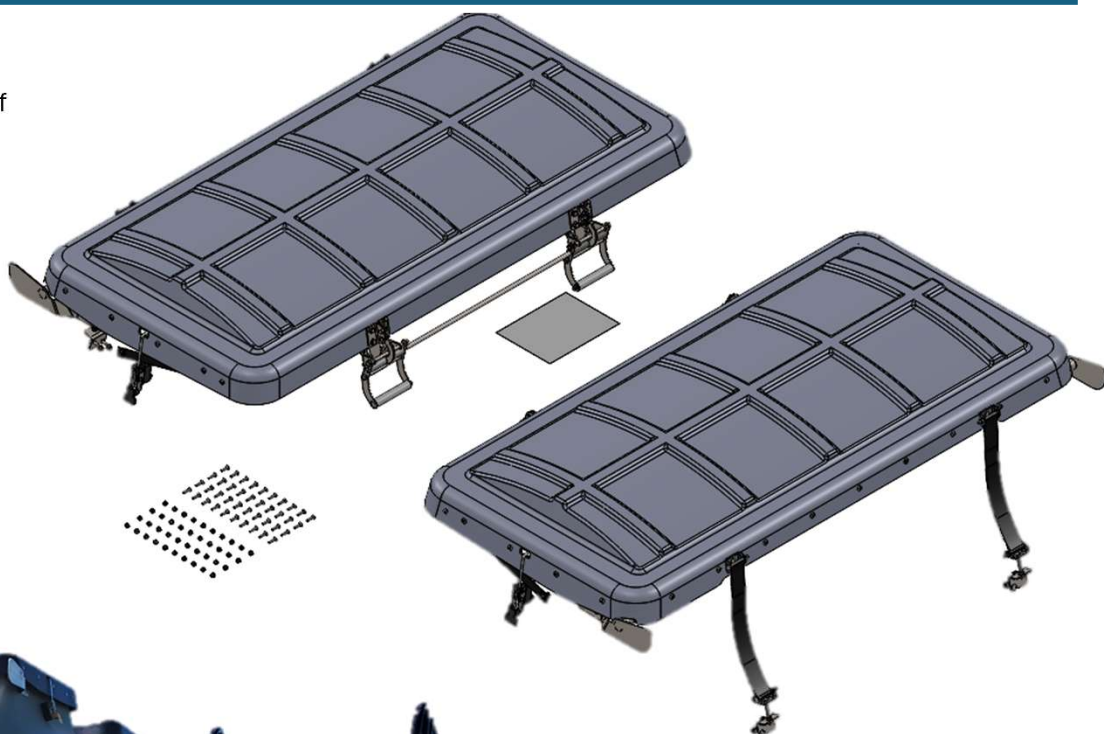


A002961AA
KIT – GPS GLOBE MOUNT (2218)

LID & INNER STEP

LID UPGRADE OPTIONS

- For MY 2025 (September 2024), Montag updated the 2218 lids to improve the seal of the fertilizer and to provide a lighter and better overall solution for the customer.
- Montag has also released a field upgrade kit to update machines in the field to use these upgraded lids.



K003098

KIT – 2218 PLASTIC LID
FIELD UPGRADE



See the upgraded lids in action by
scanning the QR code below!

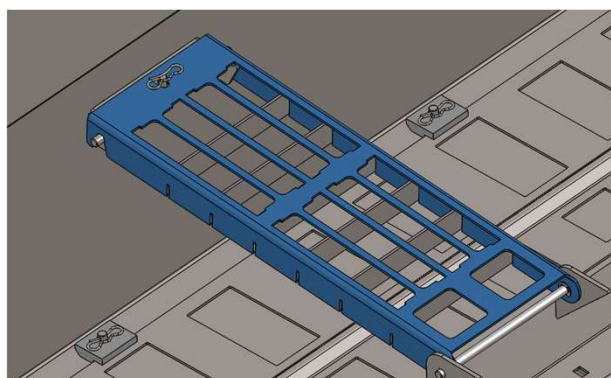


PRODUCT FLOW UPGRADE OPTIONS

- For MY 2024, Montag updated the 2218 inner step. This allows product to flow better through it, helping the fertilizer bin to empty more evenly.

W002987

UPDATED INNER BIN STEP WELDMENT

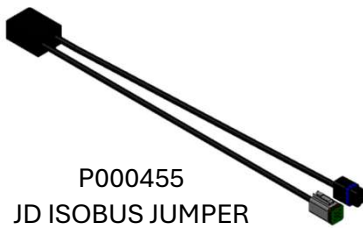
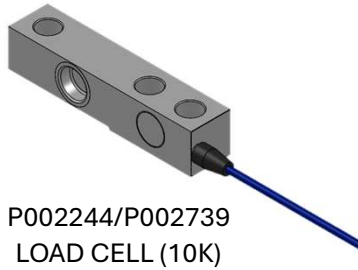


FOR PRICING, SEE PRICE GUIDE OR ORDER FORM.

UNLESS OTHERWISE NOTED, ALL PARTS IN THIS PRE-SEASON CHECKUP HAVE A 1 YEAR PARTS WARRANTY.

SCALE & MASTER SWITCH

SCALE SERVICE ITEMS	
PART #	DESCRIPTION
P000455	HARNESS – JOHN DEERE ISOBUS JUMPER
P002244	LOAD CELL (10K) W/ M12 CONNECTOR (16’) (SERVICE)
P002266	BLOCK – M12, 6 PORT JUNCTION (SERVICE)
P002732	BLOCK – DT 6 PIN, 7 PORT JUNCTION
P002739	LOAD CELL (10K) W/ DT 6 PIN HARNESS (14’)



- Check scale function to ensure that all load cells and connectors are functioning correctly.
- If scales are bouncing or erratic, unplug all load cells and plug in individually to see which one is causing the errors.
- If the scales are not pulling up on the ISOBUS, make sure that the harness from the scale to the dry controller is connected securely and clean.
- Only use air or electric contact cleaner to clean connections. Dielectric grease will cause scales to read erratically and may void load cell warranty if used.



SCALE UPGRADE OPTIONS

- For MY 2023, Montag released the Point ISO scale kit option. This scale kit has a digital display on the machine and allows the operator to manage their scale system from their phone via Bluetooth. It is also integrated into the Montag ISOBUS Dry Rate Controller (MDRC).

KIT	DESCRIPTION
K002741	ISO POINT SCALE
K002747	JDRC ISO POINT SCALE



MASTER SWITCH CONTROL



KIT	DESCRIPTION
P002340	REMOTE FOOT PEDAL W/ 144” LEAD
K002504	IMPLEMENT SWITCH W/ 40” LEAD
P000376	HARNESS – 120” EXT. (FOOT & IMP)



BLOCKAGE MONITORING



P003074
MONITOR – J.ASSY

BLOCKAGE MONITOR SERVICE ITEMS	
PART.#	DESCRIPTION
P003074	MONITOR – J.ASSY BLOCKAGE
P002447	REDUCER – 1.25” RUBBER
P002313	REDUCER – 1.5” RUBBER
P002311	REDUCER – 1.75” RUBBER
P002448	REDUCER – 2.0” RUBBER
P002460	SENSOR – 1.25” X 1.5” WIRELESS (FERTILIZER)
P002397	SENSOR – 1.5” X 1.5” WIRELESS (FERTILIZER)
P002308	SENSOR – 1.5” X 1.75” WIRELESS (FERTILIZER)
P002396	SENSOR – 1.75” X 1.75” WIRELESS (FERTILIZER)
P002715	SENSOR – 2.0” X 2.0” WIRELESS (FERTILIZER)



SENSOR - WIRELESS
FERTILIZER BLOCKAGE



P002447
REDUCER – 1.25”

- Blockage sensors are generally installed over the outlet of the air release and over the outside of the drop tube hose.
- The J.Assy wireless blockage monitoring system does not require wiring on the toolbar which greatly simplifies installation.

BLOCKAGE MONITOR UPGRADE OPTIONS

- J-Assy Blockage Sensors enable the farmer to run with confidence that product is being applied at all rows.
- It is common for issues to arise that inhibit product from being applied on one or more rows. Product can plug the hoses, hoses can kink, shear couplers can break to protect a meter from damage, or hoses can come off of air the releases.

Scan QR Code to understand the benefits of J-Assy blockage monitors.



*Blockage Sensor Kits listed include fertilizer sensors. Small grain and seed sensor kits are also available.

**For Kuhn toolbars, please contact Kuhn to add a blockage monitoring system.

KIT*	ROWS	HOSE SIZE (A)	HOSE SIZE (B)
K002883	4	1-1/2”	1-1/2”
K002052	4	1-3/4”	1-1/2”
K002884	6	1-1/2”	1-1/2”
K002053	6	1-3/4”	1-1/2”
K002885	8	1-1/2”	1-1/2”
K002031	8	1-3/4”	1-1/2”
K002886	12	1-1/2”	1-1/2”
K002032	12	1-3/4”	1-1/2”
K002887	16	1-1/2”	1-1/2”
K002033	16	1-3/4”	1-1/2”
K002888	18	1-1/2”	1-1/2”
K002034	18	1-3/4”	1-1/2”
K002889	24	1-1/2”	1-1/2”
K002035	24	1-3/4”	1-1/2”

FOR PRICING, SEE PRICE GUIDE OR ORDER FORM.

ALL J-ASSY PARTS IN THIS PRE-SEASON CHECKUP HAVE A 2 YEAR PARTS WARRANTY.

OTHER UPGRADES

- Montag now offers 13-16 ton Gen 1 and Gen 2 machines.
 - Please contact your local TM for more information.
- Any 2218 can be configured to have any number of rows (up to 18).
 - See K002136 for a standard 12-16 row upgrade kit
 - Contact Montag Parts to order parts to change amount of meter outputs.
- Any 2218 can be upgraded to have up to 4 sections.
 - Section control allows for more efficient fertilizer placement.
 - Customer is responsible for verifying that their harnessing supports section control. A new harness may be required.

SECTION CONTROL UPGRADE KITS		
KITS NEEDED	CURRENT CONFIG	UPGRADE TO
K000172	1 SECTION	2 SECTIONS
K002938	1 SECTION	3 SECTIONS
K002938 & K000174	1 SECTION	4 SECTIONS
K000173	2 SECTIONS	3 SECTIONS
K000173 & K000174	2 SECTIONS	4 SECTIONS
K000174	3 SECTIONS	4 SECTIONS

CRARY FAN UPGRADE OPTIONS

- If you are having a problem with field debris getting stuck on the fan screen and inhibiting air flow, we have a solution (K002990) that cleans debris from the fan screen for 8" Crary fans.

K002990
KIT - 8" CRARY FAN ROTARY
SCREEN CLEANER



POWER BEYOND HYDRAULIC UPGRADE

- Montag has recently released a hydraulic Power Beyond option for Montag metering systems.
- It is currently only available with machines with a Montag Dry Rate Controller (MDRC).
- This is intended for applications where there are limited hydraulic SCV's available.
- This allows user to control fan speed via MDRC.
- Purchase K002989AA (See Image).
- This product may have an extended lead time.

