



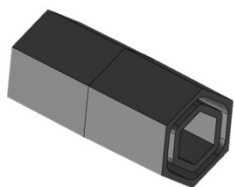
PRE-SEASON CHECKUP

GEN 2 2108 & 2208 METERING SYSTEMS

METER (GEN 2)

REPLACEMENT GEN 2 METER COMPONENTS

PART #	DESCRIPTION
A002000	METER CARTRIDGE (20.5")
A002014	AIR CHAMBER – BOLT-ON (2208)
A002017	GEAR BOX – (22/7 RATIO)
A002023	AUGER – REPLACEMENT FOR A002000
A002025	METER CARTRIDGE (17.5")
A002026	AUGER – REPLACEMENT FOR A002025
A002055	ASSEMBLY – CARTRIDGE BLANK
A002187	ASSEMBLY – AIR CHAMBER BLANK
A002551	AIR CHAMBER – BOLT ON W/ CAP (2108)
P000428	SCALE – FERTILIZER DENSITY
P002006	GASKET – CARTRIDGE MOUNTING
P002033 (1); K000151 (10)	COUPLER – SHEAR HEX
P002044	FLANGE – 2" QUICK CLAMP
P002047	GASKET – AIR CHAMBER MOUNTING
P002058	CLAMP – 2" QUICK
P002215	RETAINER – 3/8" E-CLIP



P002033
COUPLER – SHEAR
HEX



P002044
FLANGE – 2"
QUICK CLAMP



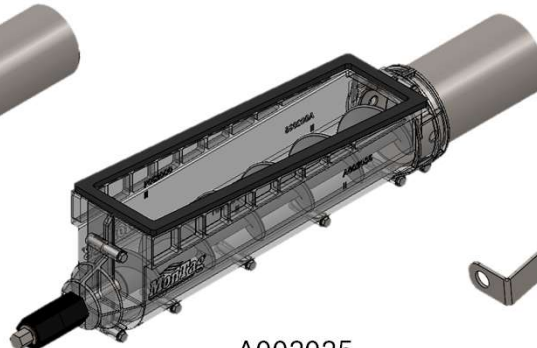
P002215
RETAINER – 3/8" E-
CLIP



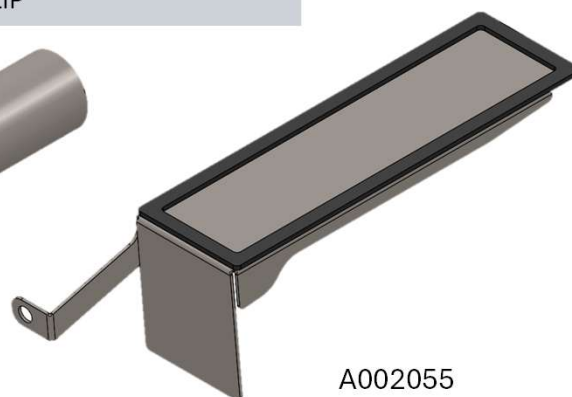
P002058
CLAMP – 2" QUICK



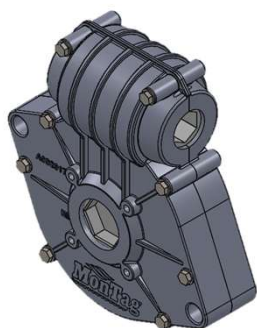
A002000
METER CARTRIDGE (20.5")



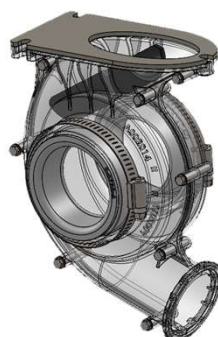
A002025
METER CARTRIDGE (17.5")



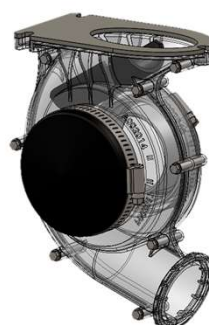
A002055
ASSEMBLY – CARTRIDGE BLANK



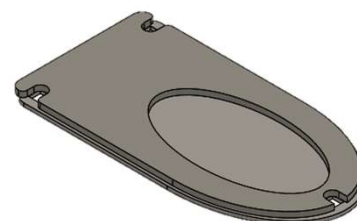
A002017
GEAR BOX (22/7 RATIO)



A002014
AIR CHAMBER (2208)



A002551
AIR CHAMBER (2108)



A002187
AIR CHAMBER BLANK

FOR PRICING, SEE PRICE GUIDE OR ORDER FORM.

UNLESS OTHERWISE NOTED, ALL PARTS IN THIS PRE-SEASON CHECKUP HAVE A 1 YEAR PARTS WARRANTY.

HYDRAULICS & LID

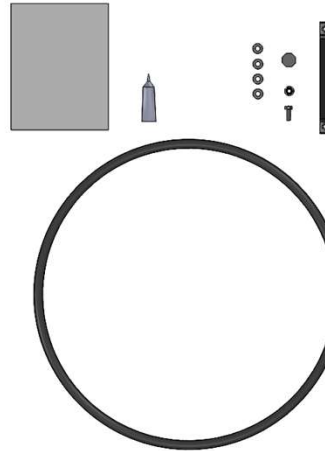
HYDRAULIC DRIVE

- Refer to the QR code below for looking up hydraulic motors and sensors for your Montag metering system.



LID SEAL UPGRADE

- For calendar year 2024, Montag updated the 2108/2208 lids to provide a better seal. Montag offers a kit to upgrade your current lid's performance.



K002979

KIT – 2X08 LID SEAL UPGRADE

PERFORMANCE UPGRADE OPTIONS

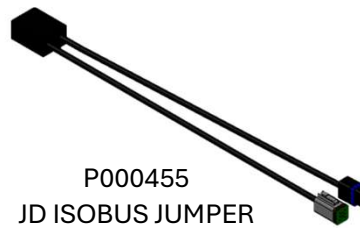
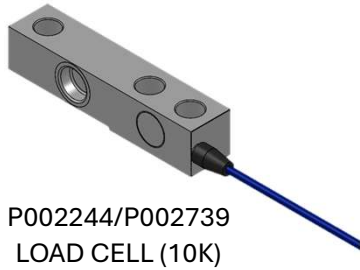
- For any of the below updates, there is not upgrade kits put together, but Montag Parts can help determine the parts that are needed to add these options to your machine.
- Montag offers a high-speed bent-axis fan motor option to increase air speed for applications with longer hose runs.
- If your machine shipped without scales, you can purchase scales as an add-on. Scales enable the farmer to be able to calibrate more effectively.

FOR PRICING, SEE PRICE GUIDE OR ORDER FORM.

UNLESS OTHERWISE NOTED, ALL PARTS IN THIS PRE-SEASON CHECKUP HAVE A 1 YEAR PARTS WARRANTY.

SCALE & MASTER SWITCH

SCALE SERVICE ITEMS	
PART #	DESCRIPTION
P000455	HARNESS – JOHN DEERE ISOBUS JUMPER
P002244	LOAD CELL (10K) W/ M12 CONNECTOR (16’) (SERVICE)
P002266	BLOCK – M12, 6 PORT JUNCTION (SERVICE)
P002732	BLOCK – DT 6 PIN, 7 PORT JUNCTION
P002739	LOAD CELL (10K) W/ DT 6 PIN HARNESS (14’)



- Check scale function to ensure that all load cells and connectors are functioning correctly.
- If scales are bouncing or erratic, unplug all load cells and plug in individually to see which one is causing the errors.
- If the scales are not pulling up on the ISOBUS, make sure that the harness from the scale to the dry controller is connected securely and clean.
- Only use air or electric contact cleaner to clean connections. Dielectric grease will cause scales to read erratically and may void load cell warranty if used.

SCALE UPGRADE OPTIONS

- For MY 2023, Montag released the Point ISO scale kit option. This scale kit has a digital display on the machine and allows the operator to manage their scale system from their phone via Bluetooth. It is also integrated into the Montag ISOBUS Dry Rate Controller (MDRC).
- A base load cell kit will also be required if machine does not already have scales.

KIT	MACHINE	DESCRIPTION
K002865	2108/ 2208 (1 PRODUCT)	ISO POINT SCALE
K002740	2208 (2 PRODUCTS)	ISO POINT SCALE
K002866	2108/ 2208 (1 PRODUCT)	JDRC ISO POINT SCALE
K002746	2208 (2 PRODUCTS)	JDRC ISO POINT SCALE



MASTER SWITCH CONTROL



KIT	DESCRIPTION
P002340	REMOTE FOOT PEDAL W/ 144” LEAD
K002504	IMPLEMENT SWITCH W/ 40” LEAD
P000376	HARNESS – 120” EXT. (FOOT & IMP)



BLOCKAGE MONITORING

BLOCKAGE SENSOR UPGRADE OPTIONS



SENSOR - WIRELESS
SEED BLOCKAGE



P003074
MONITOR - J.ASSY



SENSOR - WIRELESS
FERTILIZER BLOCKAGE



P002447
REDUCER - 1.25"

TOOLBAR ROWS	KIT (FERT)	KIT (SEED)	WIRELESS SENSOR SIZE
4	-	K002794	SENSOR - 1.25" X 1.5"
4	K002883	-	SENSOR - 1.5" X 1.5"
4	K002052	K002795	SENSOR - 1.75" X 1.5"
6	-	K002796	SENSOR - 1.25" X 1.5"
6	K002884	-	SENSOR - 1.5" X 1.5"
6	K002053	K002797	SENSOR - 1.75" X 1.5"
8	-	K002798	SENSOR - 1.25" X 1.5"
8	K002885	-	SENSOR - 1.5" X 1.5"
8	K002031	K002799	SENSOR - 1.75" X 1.5"
12	-	K002800	SENSOR - 1.25" X 1.5"
12	K002886	-	SENSOR - 1.5" X 1.5"
12	K002032	K002801	SENSOR - 1.75" X 1.5"
16	-	K002802	SENSOR - 1.25" X 1.5"
16	K002887	-	SENSOR - 1.5" X 1.5"
16	K002033	K002803	SENSOR - 1.75" X 1.5"

SPLITTERS REQUIRED

SERVICE ITEMS		BLOCKAGE MONITOR SENSORS		
PART #	DESCRIPTION	FERT	SEED	WIRELESS SENSOR SIZE
P003074	MONITOR - J.ASSY BLOCKAGE	N/A	P003232	SENSOR - 1.25" X 1.25"
P002447	REDUCER - 1.25" RUBBER	P002460	P003229	SENSOR - 1.25" X 1.5"
P002313	REDUCER - 1.5" RUBBER	P002397	P003228	SENSOR - 1.5" X 1.5"
P002311	REDUCER - 1.75" RUBBER	P002308	P003225	SENSOR - 1.5" X 1.75"
P002448	REDUCER - 2.0" RUBBER	P002396	P003227	SENSOR - 1.75" X 1.75"
		P002461	P003230	SENSOR - 2.0" X 1.75"
		P002715	P003231	SENSOR - 2.0" X 2.0"

Scan QR Code to understand the benefits of J-Assy blockage monitors.



- J-Assy Blockage Sensors enable the farmer to run with confidence that product is being applied at all rows.
- It is common for issues to arise that inhibit product from being applied on one or more rows. Product can plug the hoses, hoses can kink, shear couplers can break to protect a meter from damage, or hoses can come off of the air releases.

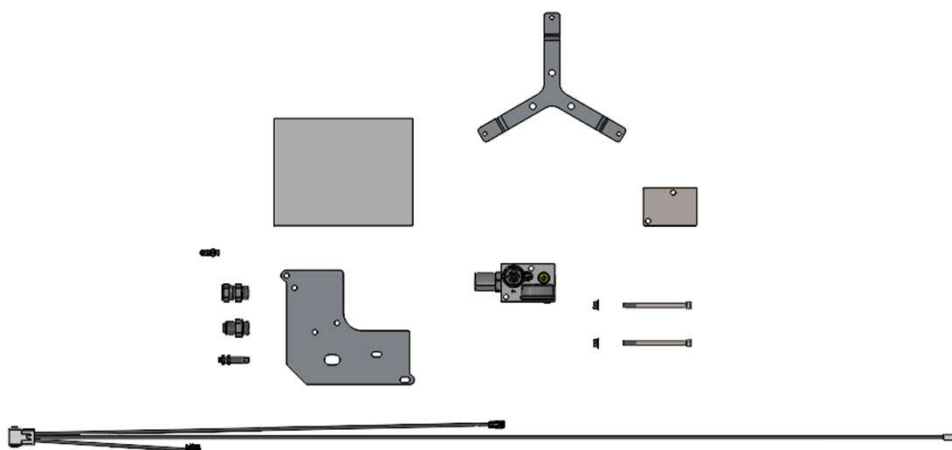
OTHER UPGRADES

- If you have the smaller 30 CuFt bins, you can purchase 50 CuFt bins to extend your capacity and run time.
- Any 2X08 can be configured to have any number of rows (up to 8).
 - Contact Montag Parts to order parts to change amount of meter outputs.
- Any 2108 can be upgraded to have up to 4 sections.
 - Section control allows for more efficient product placement.
 - Customer is responsible for verifying that their harnessing supports section control. A new harness may be required.
- 2208 machines do not have released upgrade kits, but contact Montag parts if interested, and Montag can develop upgrade kits.

2108 SECTION CONTROL UPGRADE KITS		
KITS NEEDED	CURRENT CONFIG	UPGRADE TO
K002934	1 SECTION	2 SECTIONS
K002937	1 SECTION	3 SECTIONS
K002936 & K002937	1 SECTION	4 SECTIONS
K002935	2 SECTIONS	3 SECTIONS
K002935 & K002936	2 SECTIONS	4 SECTIONS
K002936	3 SECTIONS	4 SECTIONS

POWER BEYOND HYDRAULIC UPGRADE

- Montag has recently released a hydraulic Power Beyond option for Montag metering systems.
- It is currently only available with machines with a Montag Dry Rate Controller (MDRC).
- This is intended for applications where there are limited hydraulic SCV's available.
- This allows user to control fan speed via MDRC
- Purchase K003063AA (See Image).



FOR PRICING, SEE PRICE GUIDE OR ORDER FORM.

UNLESS OTHERWISE NOTED, ALL PARTS IN THIS PRE-SEASON CHECKUP HAVE A 1 YEAR PARTS WARRANTY.

