



MONTAG MFG.

GEN I

TWO SECTION KIT

SERIAL #20576-21639\*

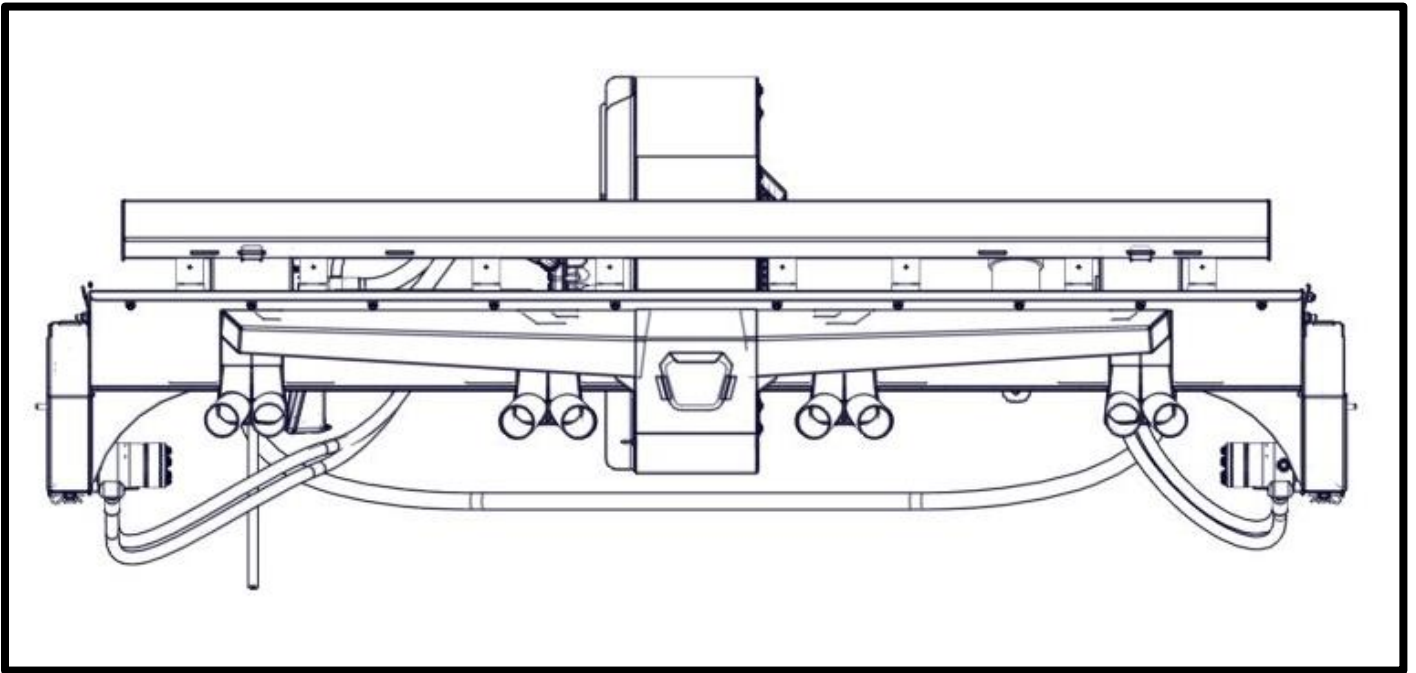
\*WITH THE EXCEPTION OF #21593





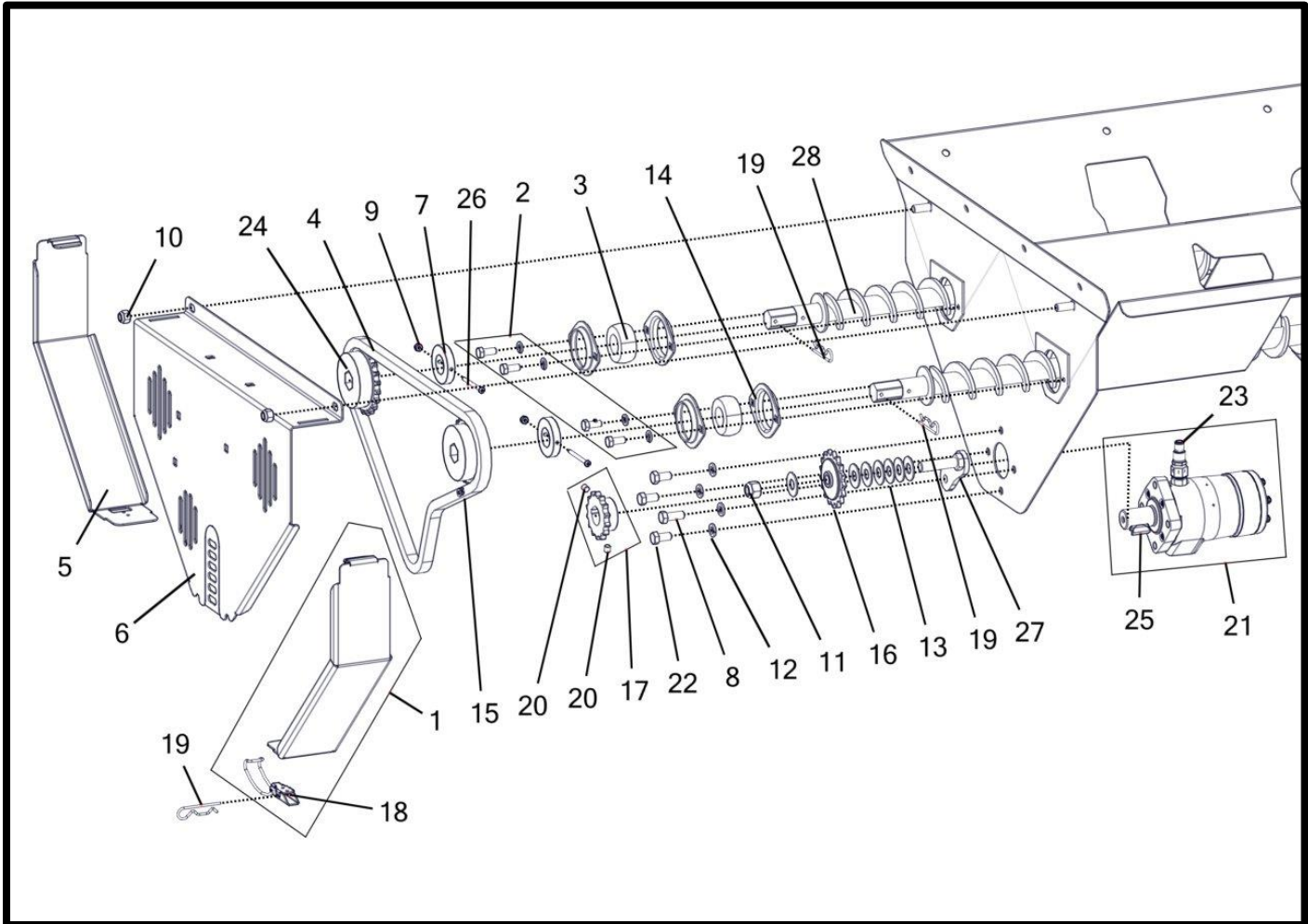
## GEN I TWO SECTION UPGRADE KITS

Part Number	Description
K002121	Kit - Gen I 16 Row 2 Section Upgrade (2-1/2" STD) *Check Harness Compatibility
K002122	Kit - Gen I 24 Row 2 Section Upgrade (2-1/2" STD) *Check Harness Compatibility
K002149	Kit - Gen I 16 Row 2 Section Upgrade (2" STD) *Check Harness Compatibility
K002150	Kit - Gen I 24 Row 2 Section Upgrade (2" STD) *Check Harness Compatibility



ESTIMATED INSTALL TIME: 6 HOURS

## TWIN AUGER DRIVE (STANDARD OUTPUT SHOWN)



**TWO SECTION DRIVE COMPONENTS MIRROR THESE  
LOCATIONS ON THE OPPOSITE SIDE**

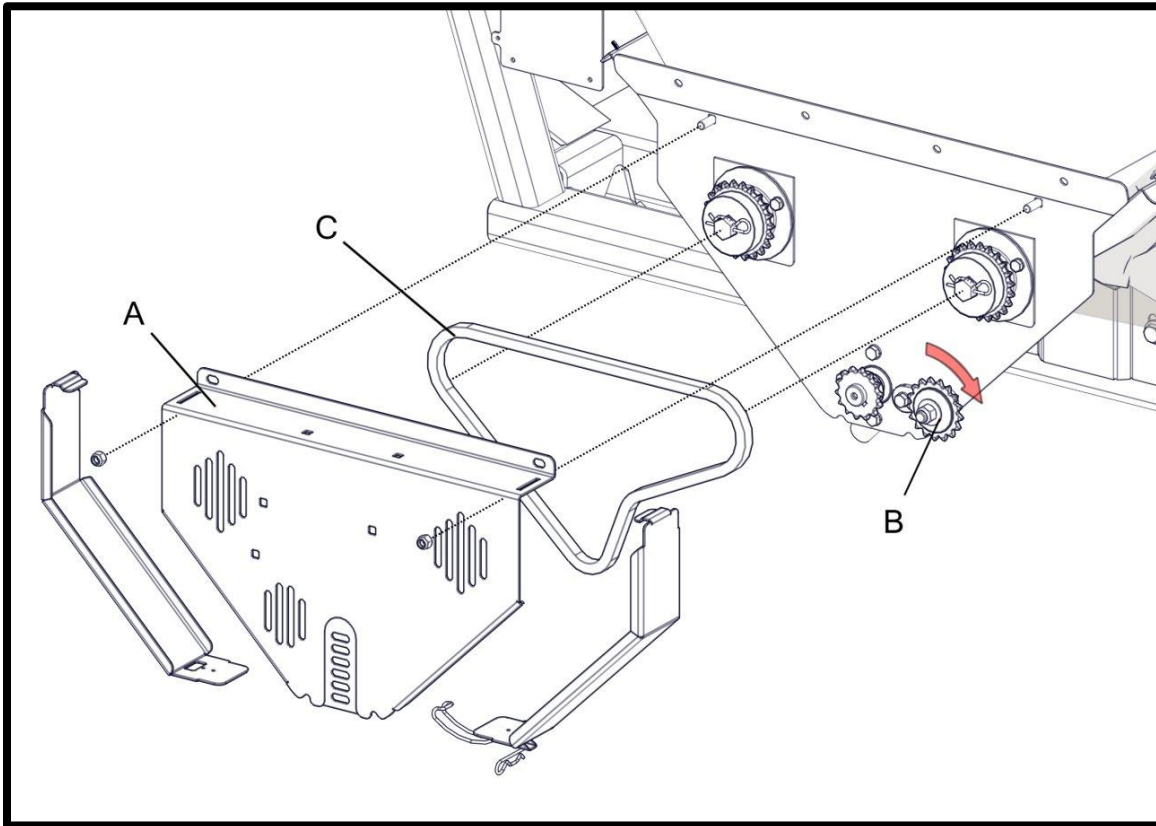


## TWIN AUGER DRIVE (QTYS REFLECT BOTH ENDS) (STANDARD OUTPUT SHOWN)

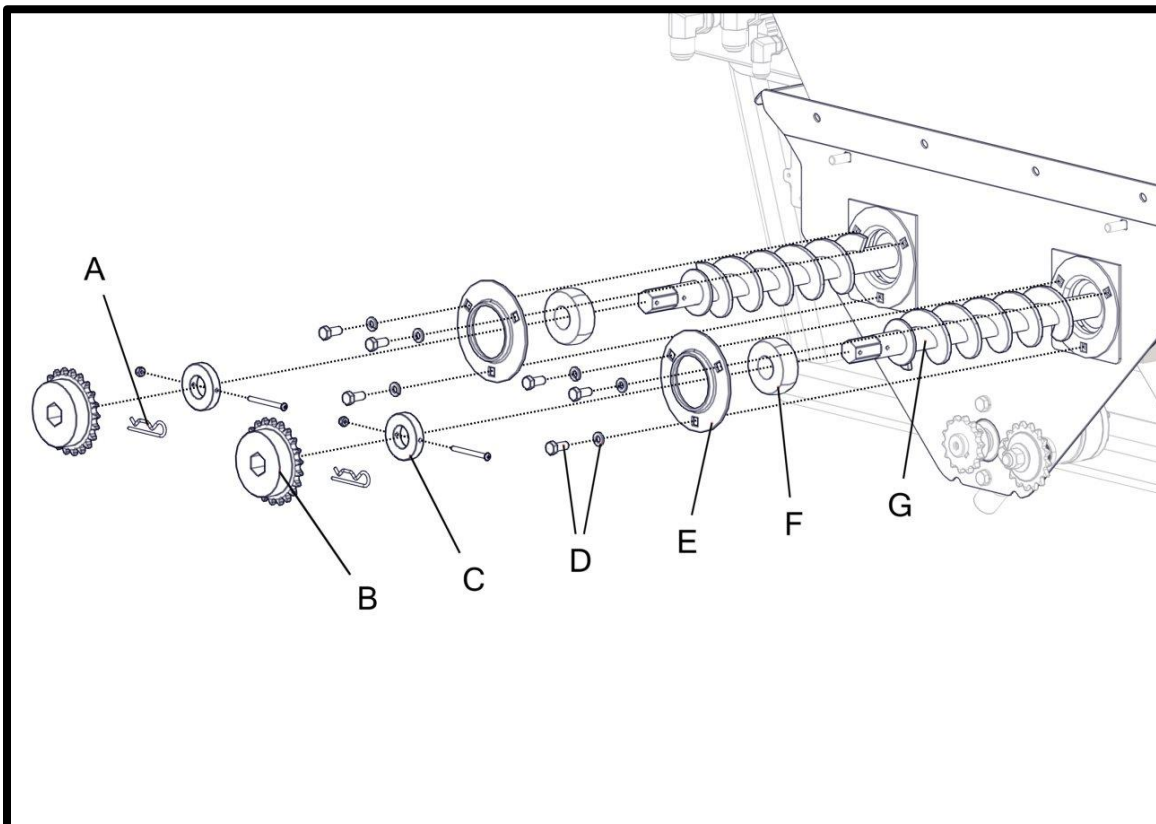
Item No.	Qty	Part Number	Description
1	2	A000162	Shield - Twin Auger Side Door
2	2	K000007	Kit - 52mm Meter Hardware (STD) (SHOWN)
	2	K000008	Kit - 62mm Meter Hardware (HO)
3	4	M000185	Bushing - 52 mm Auger Nylon (STD) (SHOWN)
	4	M000184	Bushing - 62 mm Auger Nylon (HO)
4	2	M000603	Chain - Twin Auger Drive
5	2	M001155	Shield - Twin Auger Safety Door (LH)
6	2	M002828	Shield - Twin Auger Gen I Main Safety
7	4	M003271	Collar - 1.0" ID x 2.0" OD x .38"
8	2	P000097	Bolt - 3/8-16 x 1 x 1 Hex (F593 304 S/S FB)
9	4	P000102	Nut - #8-32 Hex Nylon Lock (18-8 S/S FB)
10	4	P000105	Nut - 3/8-16 Hex Nylon Lock (F594 316 S/S FB)
11	8	P000106	Nut - 1/2-13 Hex Nylon Lock (F594 316 S/S FB)
12	8	P000113	Washer - 3/8" Split Lock (0.68" OD) (18-8 S/S FB)
13	14	P000114	Washer - 1/2" Flat (1.25" OD) (18-8 S/S FB) (Shims)
14	8	P000214	Bearing Flange - 52 mm (STD) (SHOWN)
	8	P000215	Bearing Flange - 62 mm (HO)
15	2	P000217	Chain Link- #40 S/S Connecting
16	2	P000219	Sprocket - #40 17 Tooth Idler 1/2" Bore
17	2	P000220	Sprocket - #40 14 Tooth 1" Bore
18	2	P000566	Catch - Safety Shield
19	6	P000567	Pin - Safety Shield Catch
20	4	P000785	Set Screw - 5/16-18 x 5/16" UNC
21	2	P000806	Motor - Hyd. Motor Auger (Gen I) w/ Speed Sensor (101-3931-009)
22	6	P000852	Bolt - 3/8-16 x 0.75 x 0.75 Hex (F593 304 S/S FB)
23	2	P000926	Sensor - Char-Lynn Motor Speed Sensor (60 Pulse)
24	4	P002081	Sprocket - #40 22 Tooth 7/8" Hex Bore
25	2	P002694	Key - Woodruff .25" x 1" #15
26	4	P002960	Screw - #8-32 x 2.25 Machine Button Head Socket (18-8 S/S FB)
27	2	W000098	Bracket - Chain Tensioner Weldment
28	2	W00_____	Right Auger (See Below) (SHOWN)
	2	W00_____	Left Auger (See Below)

### HALF-AUGER VARIATIONS (AS SEEN FROM REAR (FAN SIDE) OF METER)

ROW/OUTPUT VARIATION	LEFT-HAND AUGER	RIGHT-HAND AUGER
Auger - 4 Row STD Hex (2")	W002623	W002631
Auger - 6 Row STD Hex (2")	W002624	W002632
Auger - 4 Row HO Hex (2-1/2")	W002621	W002628
Auger - 6 Row HO Hex (2-1/2")	W002620	W002627
Auger - 4 Row Low Rate Hex (2")	W002626	W002634
Auger - 4 Row Low Rate Hex (2-1/2")	W002622	W002630
Auger - 6 Row Low Rate Hex (2")	W002625	W002633
Auger - 6 Row Low Rate Hex (2-1/2")	W002619	W002629



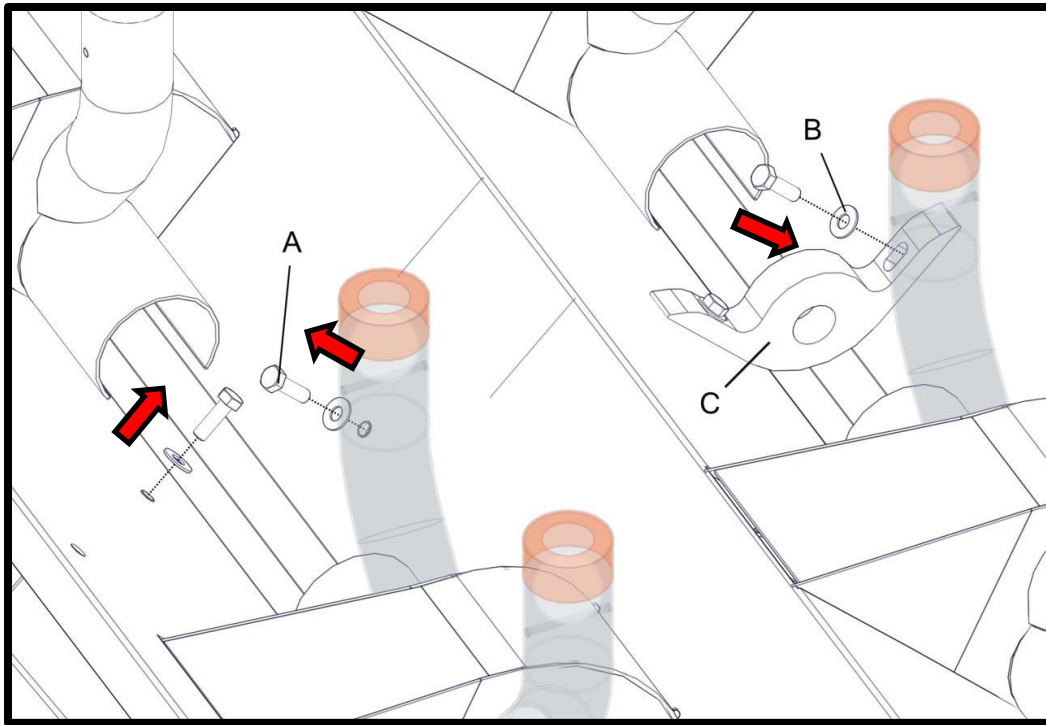
REMOVE COVER (A).  
 LOOSEN CHAIN  
 TENSIONER (B).  
 REMOVE CHAIN (C).



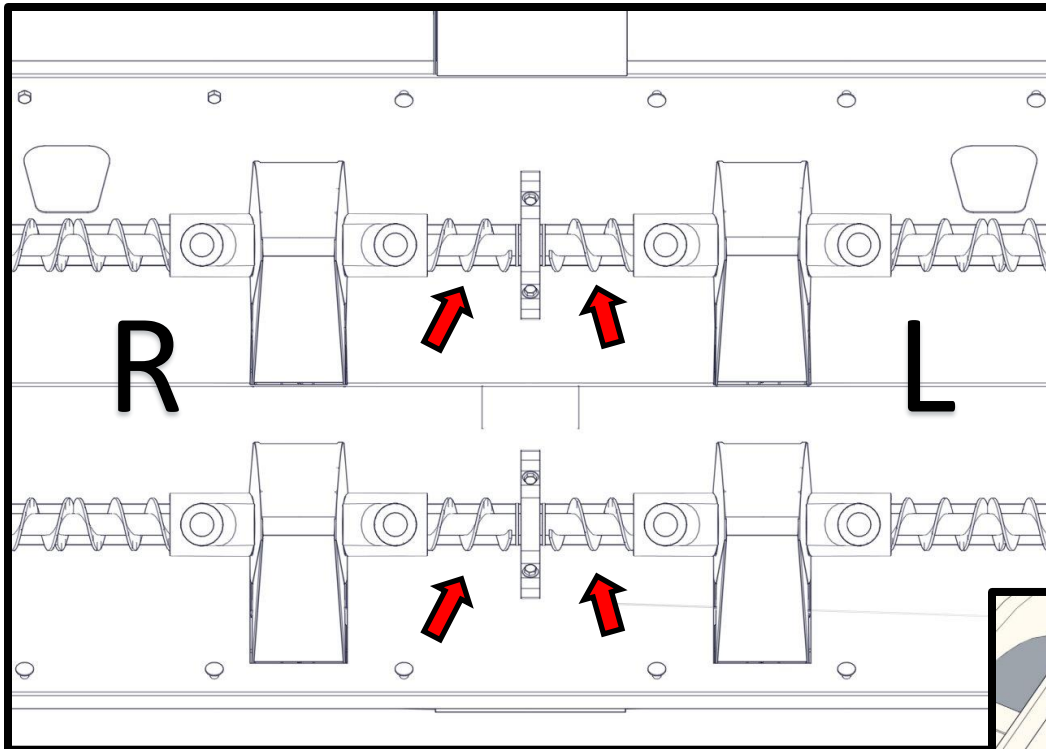
REMOVE PINS (A) FROM  
 END OF AUGER. REMOVE  
 SPROCKETS (B), COLLARS  
 (W/HARDWARE) (C),  
 BEARING FLANGE  
 HARDWARE (D),  
 BEARING FLANGES (E),  
 AND BEARINGS (F).  
 REMOVE EXISTING FULL  
 LENGTH AUGERS (G)  
 FROM METER.

ON THE NON-DRIVE END  
 OF THE METER, REMOVE  
 THE BEARING FLANGE  
 HARWARE, BEARING  
 FLANGES, AND  
 BEARINGS.



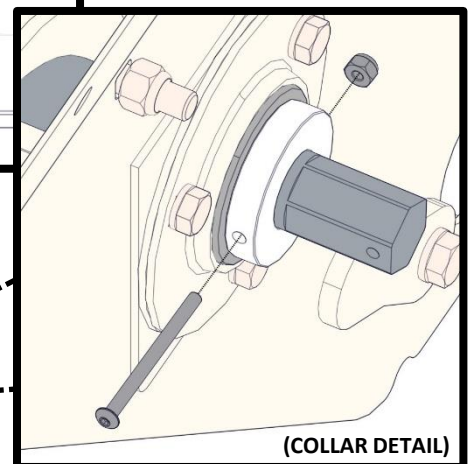
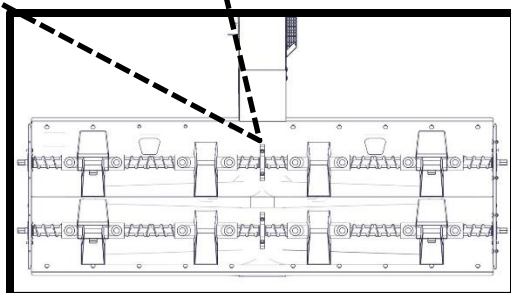


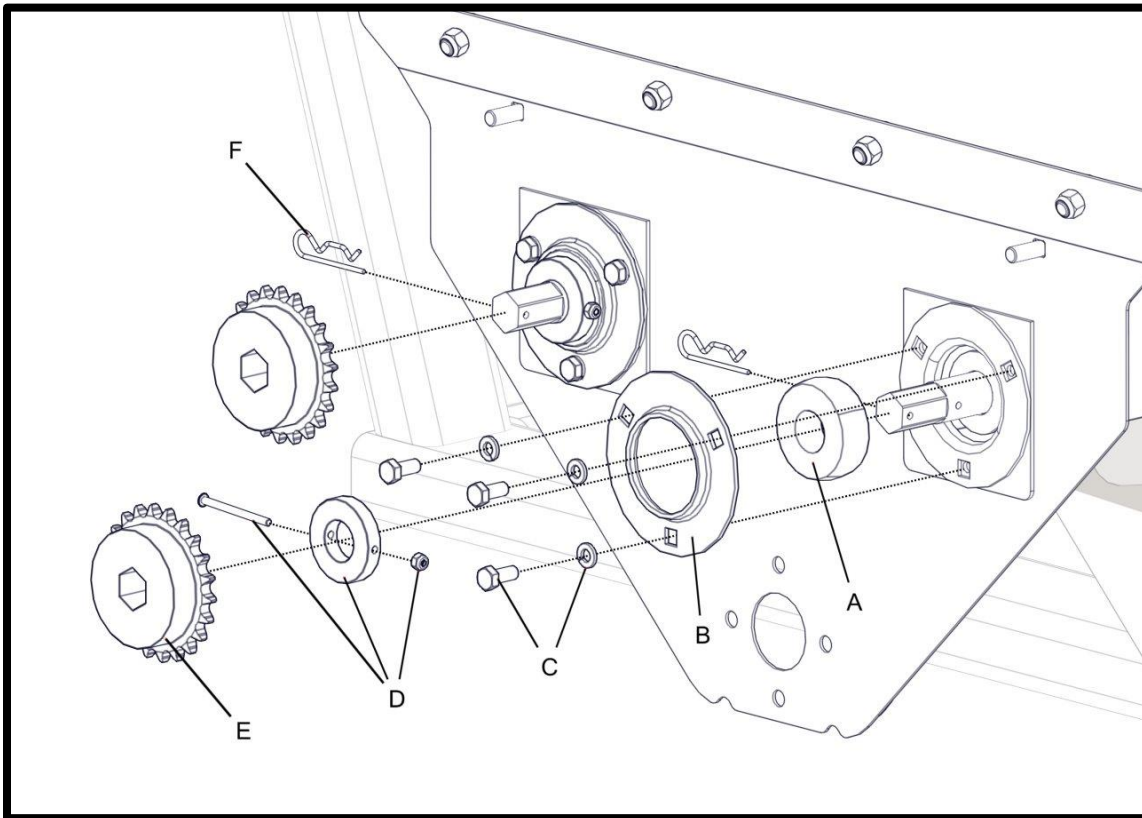
REMOVE BOLTS (A) AND WASHERS (B) FROM CENTER OF METER. INSERT CENTER SECTION BEARINGS (C). REPLACE BOLTS AND WASHERS. DO NOT OVERTIGHTEN.



PLACE LEFT AND RIGHT HALF-AUGERS IN THE METER. **THEY MUST BE ORIENTED AS SHOWN. NOTE THE DIRECTION OF THE FLIGHTING IN THE IMAGE TO THE LEFT.** THE LEFT AND RIGHT DESIGNATIONS ARE BASED ON THE REAR, OR FAN SIDE, OF THE METER.

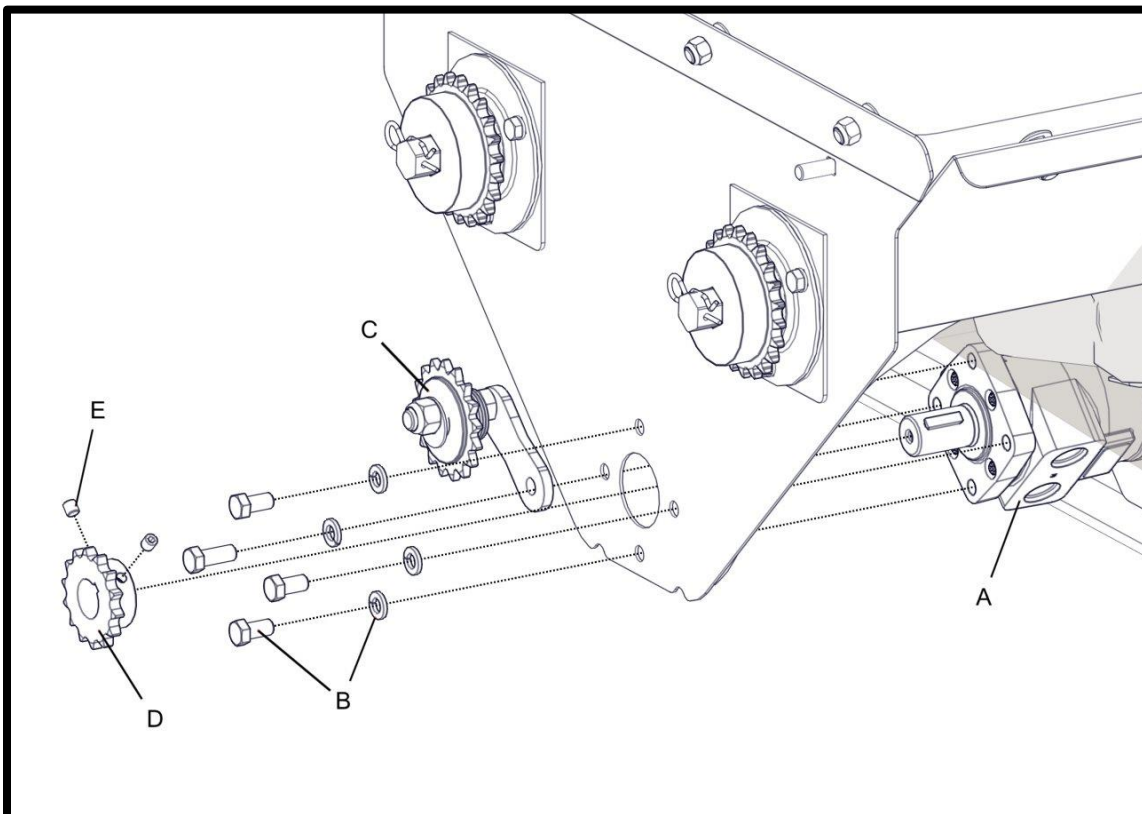
**AUGERS MUST TURN FREE BY HAND.**





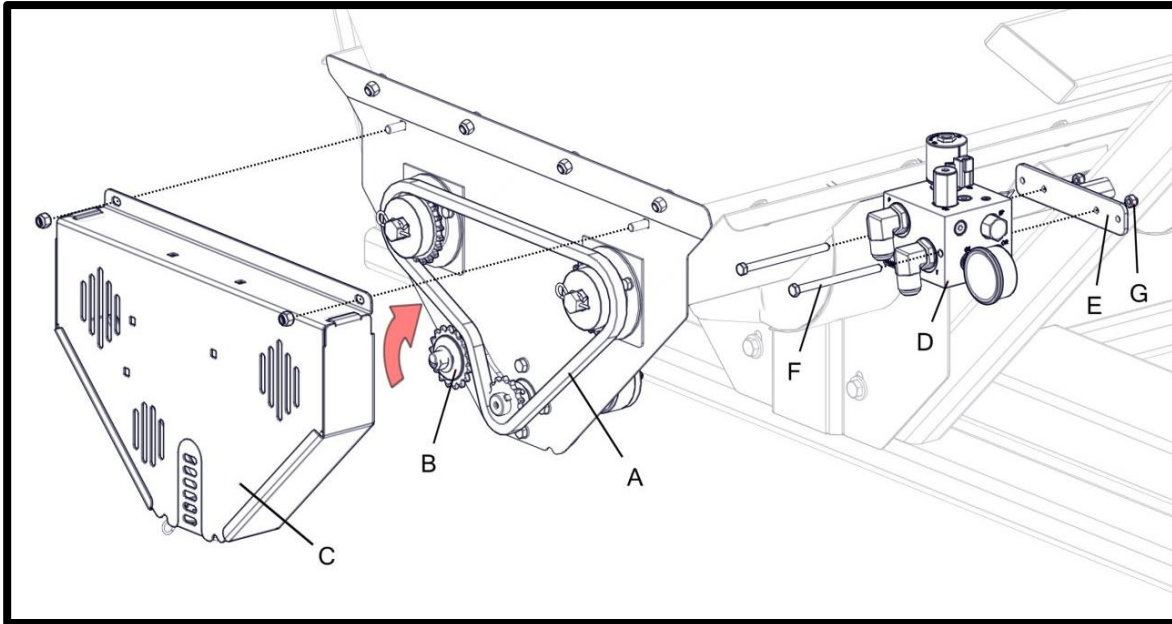
ON THE SIDE YOU REMOVED THE DRIVE COMPONENTS, REPLACE EACH ITEM IN THE REVERSE ORDER.

ON THE SIDE YOU ARE ADDING THE DRIVE TO, REPLACE THE BEARINGS (**A**), THE BEARING FLANGES (**B**), THE BEARING FLANGE HARDWARE (**C**), AND COLLARS (W/HARDWARE) (**D**). PLACE SPROCKETS (**E**) ON THE ENDS OF THE AUGERS, AND SECURE THEM WITH PINS (**F**).



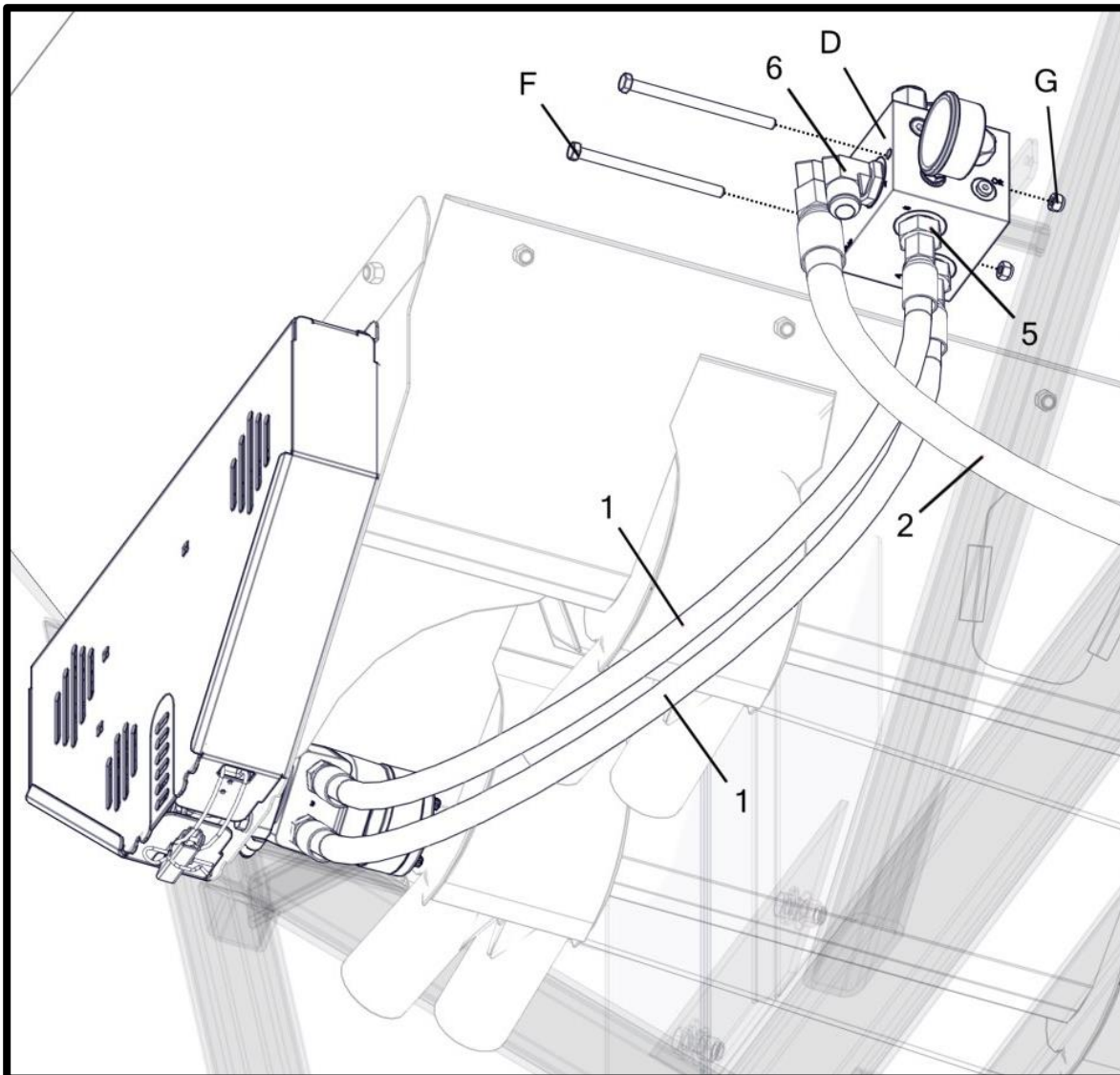
ADD MOTOR (**A**) IN THE ORIENTATION SHOWN. SECURE WITH MOTOR HARDWARE (**B**). THE LONGER OF THE FOUR BOLTS SHOULD GO THROUGH THE CHAIN TENSIONER (**C**). LEAVE THE TENSIONER LOOSE SO IT CAN BE ADJUSTED. PLACE SPROCKET (**D**) ON THE MOTOR SHAFT AND SECURE WITH SET SCREWS (**E**).





PLACE CHAIN (A) ON SPROCKETS. PUSH TENSIONER (B) UP AGAINST CHAIN TO REMOVE MOST OF THE SLACK, AND FULLY TIGHTEN. CHECK SPROCKET ALIGNMENT. SHIM TENSIONER IF NEEDED. REPLACE COVER (C).

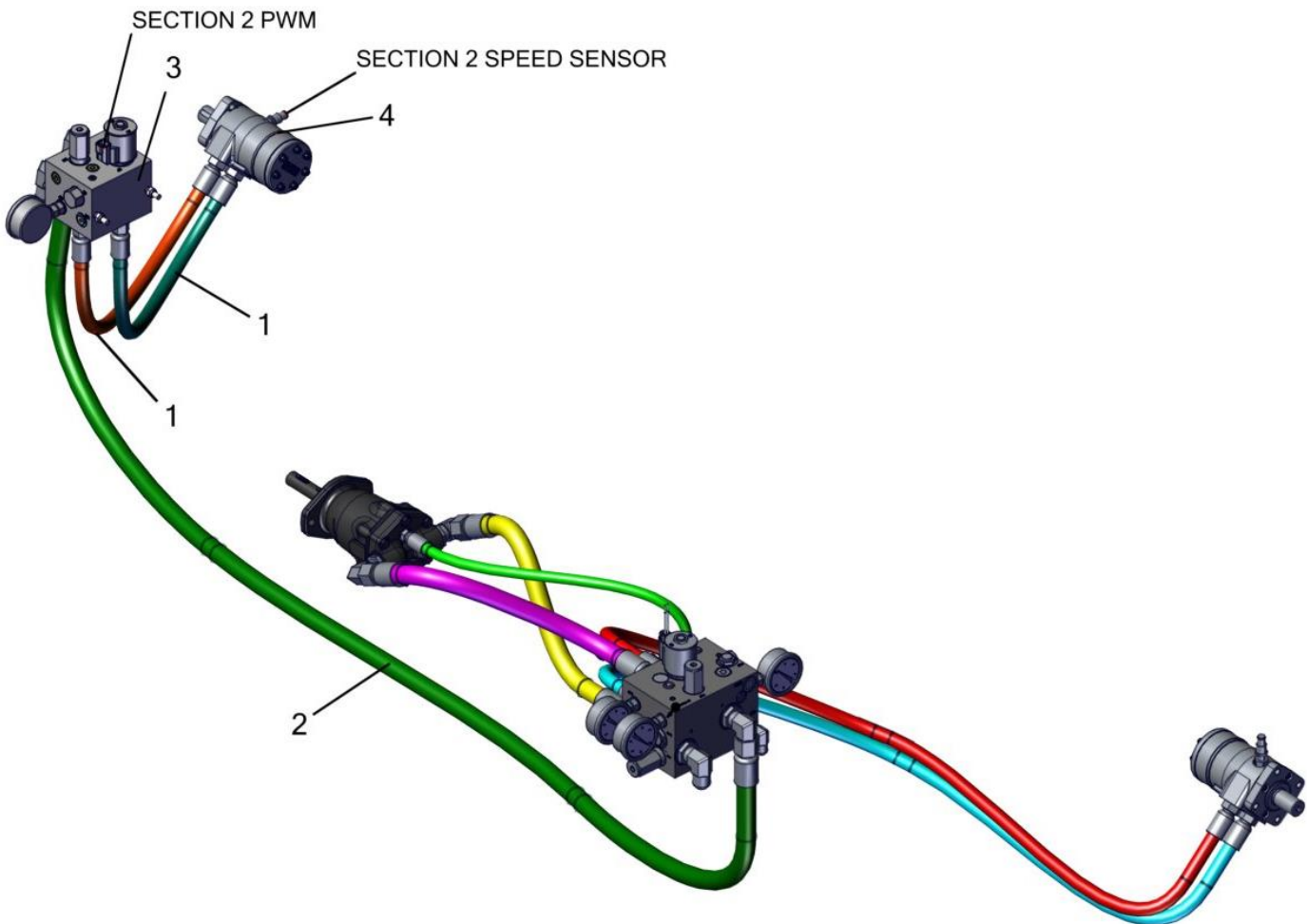
ATTACH HYDRAULIC VALVE (D) TO THE CRADLE ON THE BRACKET SHOWN (E), USING BOLTS (F) AND NUTS (G).



ATTACH HYDRAULIC HOSES AS SHOWN.

(HOSES AND FITTINGS SHOWN TO THE LEFT ARE IDENTIFIED ON PAGE 11.)

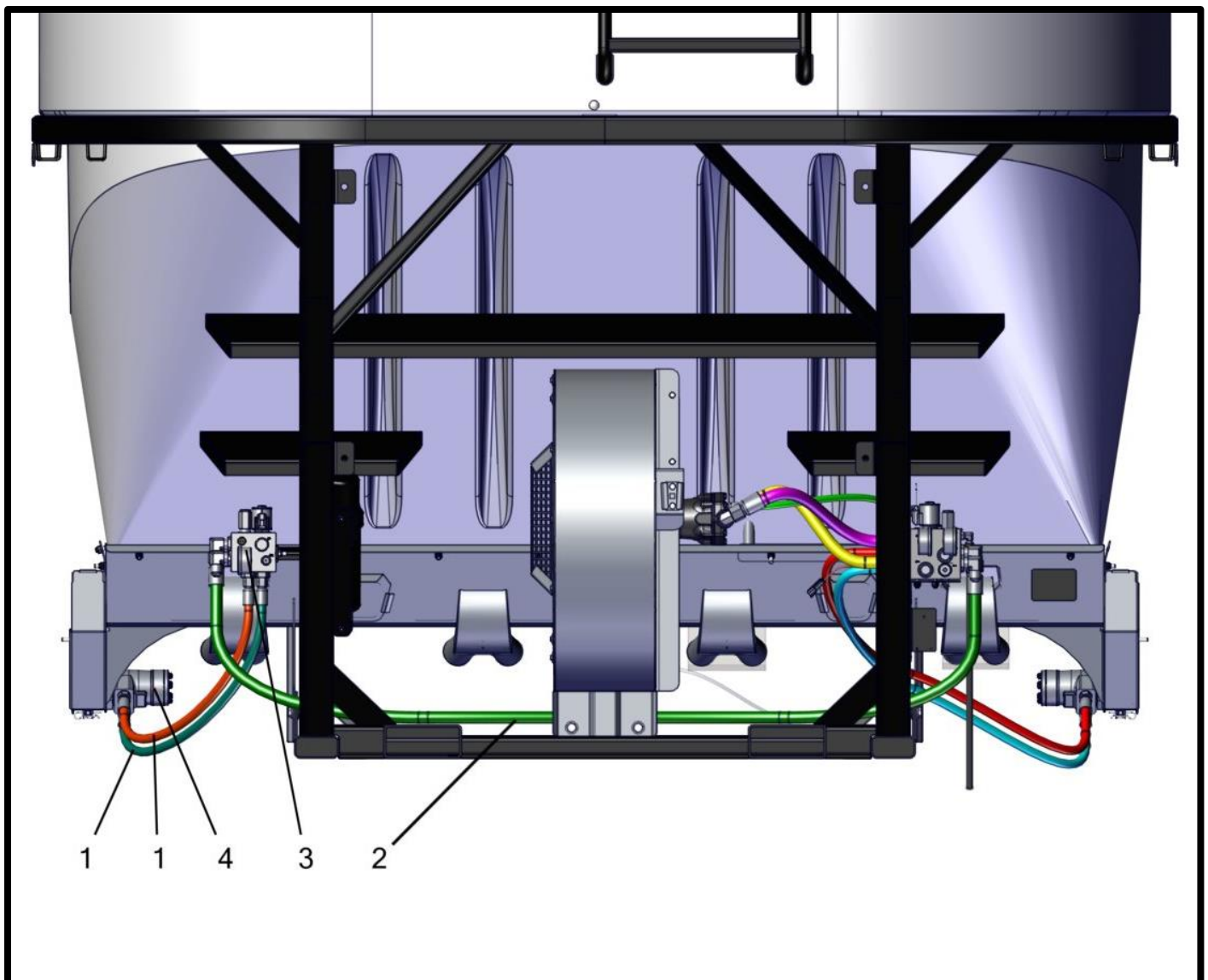
## TWO SECTION HYDRAULIC HOSES AND MOTORS



INSTALL PWM2 AND SPEED SENSOR 2 HARNESS CONNECTIONS AS SHOWN.

## TWO SECTION HYDRAULIC HOSES AND MOTORS

ITEM NO.	Qty	Part Number	Description
1	2	P000714	Hose - Hydraulic 1/2" x 36" (#10 Male O-ring x #8 Female JIC Swivel)
2	1	P000715	Hose - Hydraulic 3/4" x 92" (#12 Female JIC Swivel x #12 Female JIC Swivel)
3	1	P000718	Valve - Electric Hydraulic Block Manifold (PWM Closed)
4	1	P000806	Motor - Hyd. Motor Auger (Gen I) w/ Speed Sensor (101-3931-009)
5	2	P000384	Fitting - Hyd - #12 M O-Ring x M #8 JIC Straight
6	2	P000385	Fitting - Hyd - #12 M JIC x #12 M O-Ring Elbow 90





**Montag Manufacturing, Inc.**  
**3816 461st Avenue**  
**Emmetsburg, IA 50536**  
**Phone: (712) 852-4572**  
**FAX: (712) 852-4574**

**Tech Support: (712) 852-4572**  
**or**  
**support@montagmfg.com**

**Visit us at:**  
**[www.montagmfg.com](http://www.montagmfg.com)**