

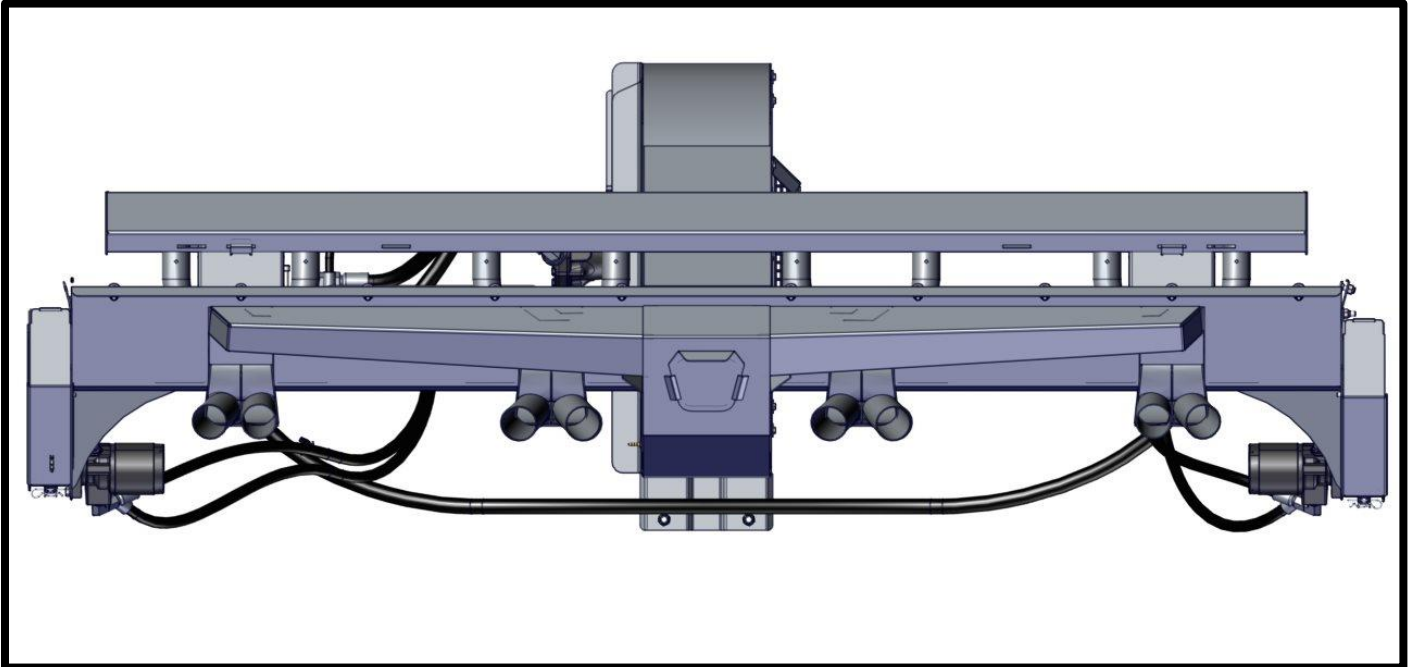


MONTAG MFG.
GEN 1
TWO SECTION CONVERSION
INSTRUCTIONS (2021+)
SERIAL #21593, 21639 -



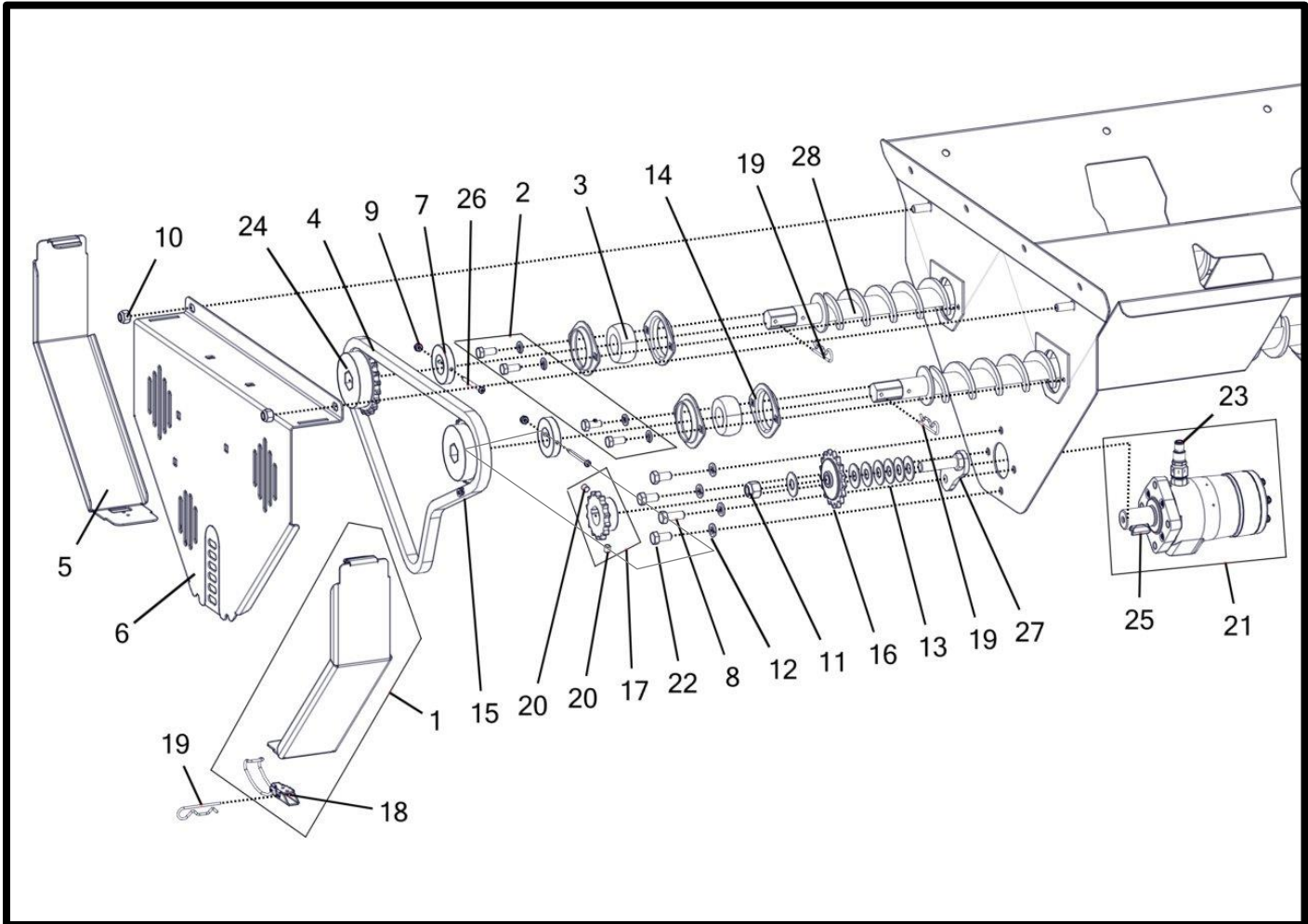
GEN I TWO SECTION UPGRADE KITS

Part Number	Description
K002527	Kit - Gen I 16 Row 2 Section Upgrade (2-1/2" STD) (2021+) *Check Harness Compatibility
K002526	Kit - Gen I 24 Row 2 Section Upgrade (2-1/2" STD) (2021+) *Check Harness Compatibility
K002536	Kit - Gen I 16 Row 2 Section Upgrade (2" STD) (2021+) *Check Harness Compatibility
K002537	Kit - Gen I 24 Row 2 Section Upgrade (2" STD) (2021+) *Check Harness Compatibility



ESTIMATED INSTALL TIME: 6 HOURS

TWIN AUGER DRIVE (STANDARD OUTPUT SHOWN)



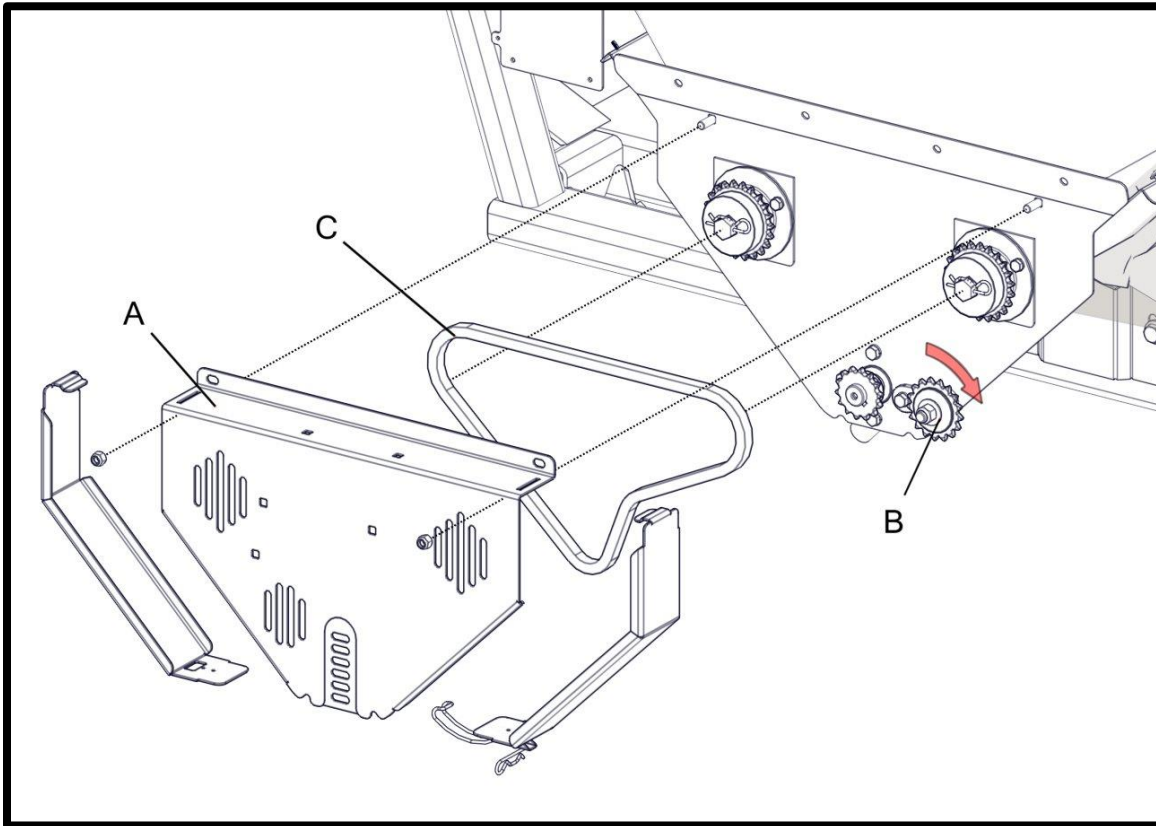
**TWO SECTION DRIVE COMPONENTS MIRROR THESE
LOCATIONS ON THE OPPOSITE SIDE**

TWIN AUGER DRIVE (QTYS REFLECT BOTH ENDS) (STANDARD OUTPUT SHOWN)

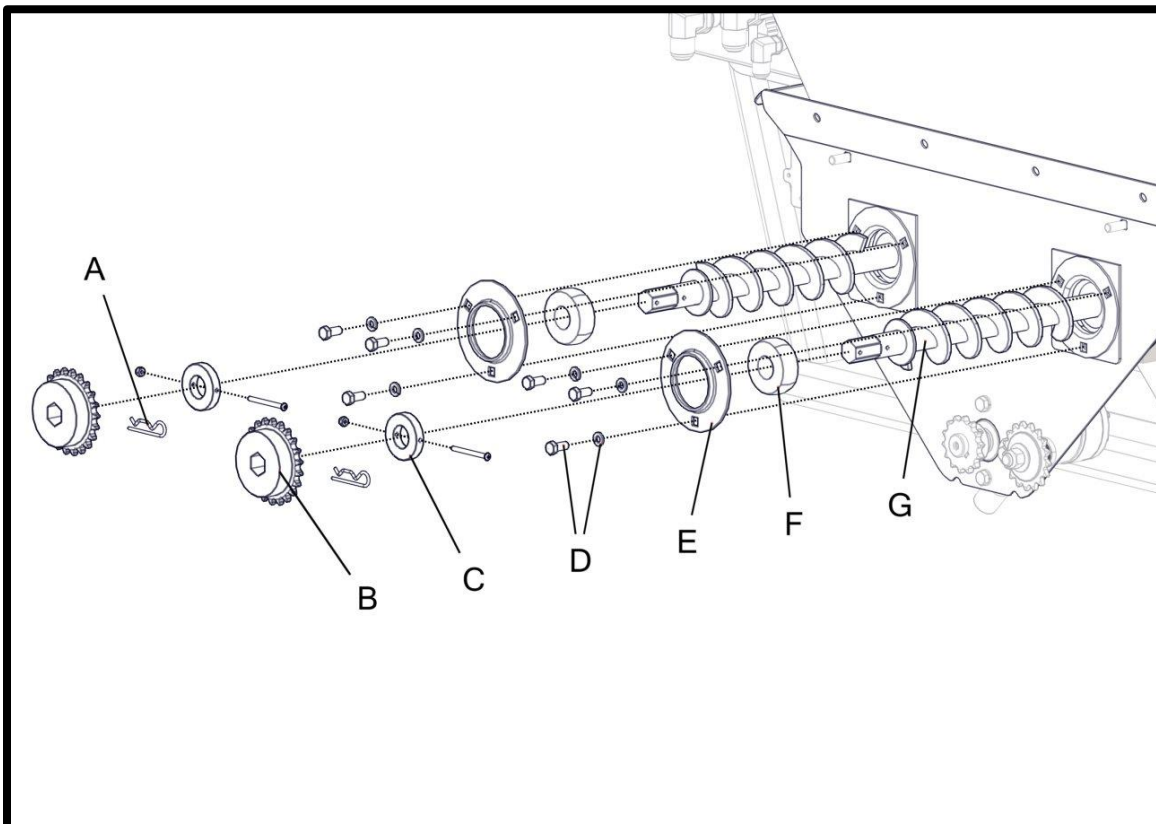
Item No.	Qty	Part Number	Description
1	2	A000162	Shield - Twin Auger Side Door
2	2	K000007	Kit - 52mm Meter Hardware (STD) (SHOWN)
	2	K000008	Kit - 62mm Meter Hardware (HO)
3	4	M000185	Bushing - 52 mm Auger Nylon (STD) (SHOWN)
	4	M000184	Bushing - 62 mm Auger Nylon (HO)
4	2	M000603	Chain - Twin Auger Drive
5	2	M001157	Shield - Twin Auger Safety Door
6	2	M002828	Shield - Twin Auger Gen I Main Safety
7	4	M003271	Collar - 1.0" ID x 2.0" OD x .38"
8	2	P000097	Bolt - 3/8-16 x 1 x 1 Hex (F593 304 S/S FB)
9	4	P000102	Nut - #8-32 Hex Nylon Lock (18-8 S/S FB)
10	4	P000105	Nut - 3/8-16 Hex Nylon Lock (F594 316 S/S FB)
11	8	P000106	Nut - 1/2-13 Hex Nylon Lock (F594 316 S/S FB)
12	8	P000113	Washer - 3/8" Split Lock (0.68" OD) (18-8 S/S FB)
13	14	P000114	Washer - 1/2" Flat (1.25" OD) (18-8 S/S FB) (Shims)
14	8	P000214	Bearing Flange - 52 mm (STD) (SHOWN)
	8	P000215	Bearing Flange - 62 mm (HO)
15	2	P000217	Chain Link- #40 S/S Connecting
16	2	P000219	Sprocket - #40 17 Tooth Idler 1/2" Bore
17	2	P000220	Sprocket - #40 14 Tooth 1" Bore
18	2	P000566	Catch - Safety Shield
19	6	P000567	Pin - Safety Shield Catch
20	4	P000785	Set Screw - 5/16-18 x 5/16" UNC
21	2	P003128	Motor - Hyd. 11.9 Culn Gerotor w/ Speed Sensor (TE0195FS100FSAA)
22	6	P000852	Bolt - 3/8-16 x 0.75 x 0.75 Hex (F593 304 S/S FB)
23	2	P003165	Sensor - Parker Motor Speed (30 Pulse) (455063)
24	4	P002081	Sprocket - #40 22 Tooth 7/8" Hex Bore
25	2	P002694	Key - Woodruff .25" x 1" #15
26	4	P002960	Screw - #8-32 x 2.25 Machine Button Head Socket (18-8 S/S FB)
27	2	W000098	Bracket - Chain Tensioner Weldment
28	2	W00_	Right Auger (See Below) (SHOWN)
	2	W00_	Left Auger (See Below)

HALF-AUGER VARIATIONS (AS SEEN FROM REAR (FAN SIDE) OF METER)

ROW/OUTPUT VARIATION	LEFT-HAND AUGER	RIGHT-HAND AUGER
Auger - 4 Row STD Hex (2")	W002314	W002322
Auger - 6 Row STD Hex (2")	W002315	W002323
Auger - 4 Row HO Hex (2-1/2")	W002312	W002319
Auger - 6 Row HO Hex (2-1/2")	W002311	W002318
Auger - 4 Row Low Rate Hex (2")	W002317	W002325
Auger - 4 Row Low Rate Hex (2-1/2")	W002313	W002321
Auger - 6 Row Low Rate Hex (2")	W002316	W002324
Auger - 6 Row Low Rate Hex (2-1/2")	W002310	W002320

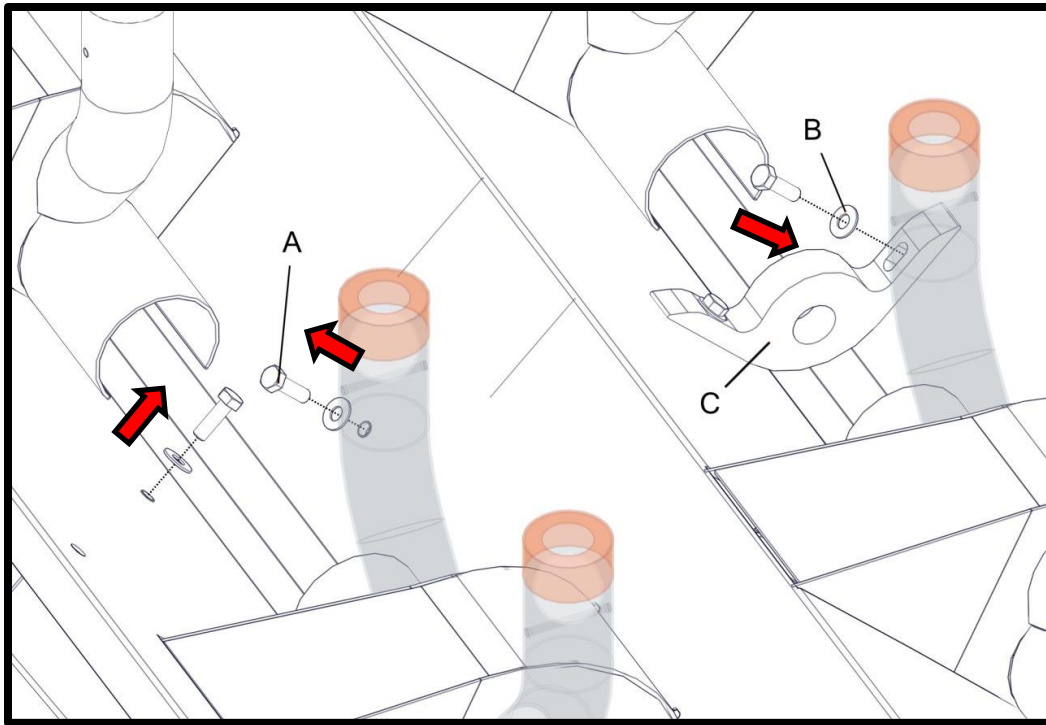


REMOVE COVER (A).
 LOOSEN CHAIN
 TENSIONER (B).
 REMOVE CHAIN (C).

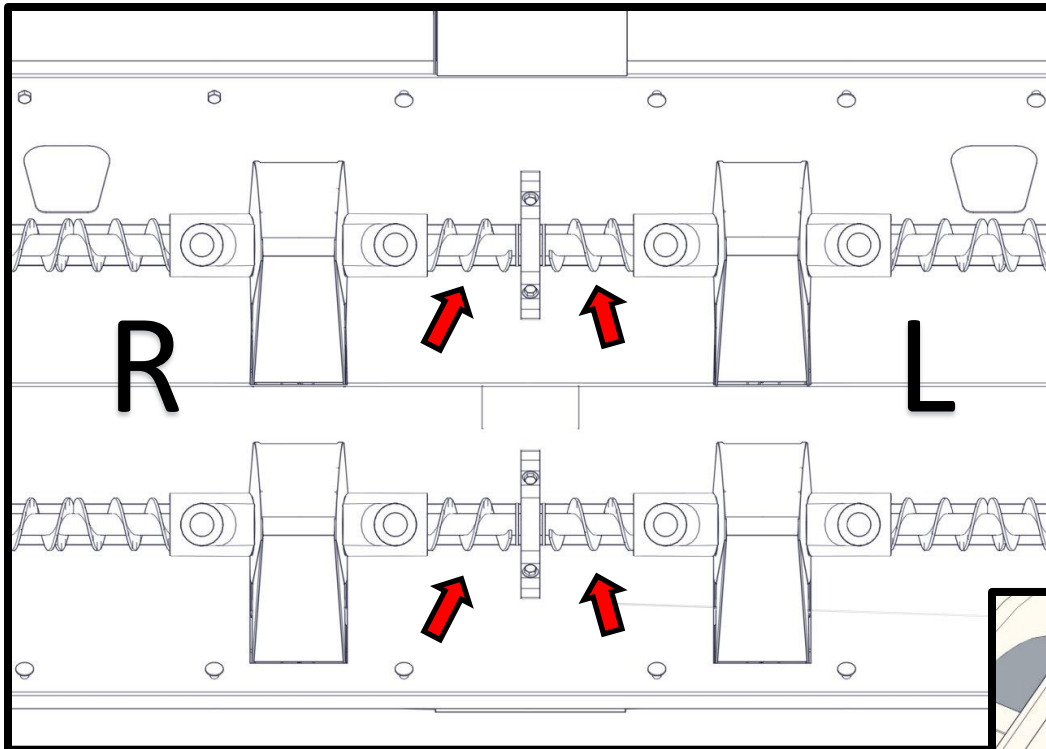


REMOVE PINS (A) FROM
 END OF AUGER. REMOVE
 SPROCKETS (B), COLLARS
 (W/HARDWARE) (C),
 BEARING FLANGE
 HARDWARE (D),
 BEARING FLANGES (E),
 AND BEARINGS (F).
 REMOVE EXISTING FULL
 LENGTH AUGERS (G)
 FROM METER.

ON THE NON-DRIVE END
 OF THE METER, REMOVE
 THE BEARING FLANGE
 HARWARE, BEARING
 FLANGES, AND
 BEARINGS.

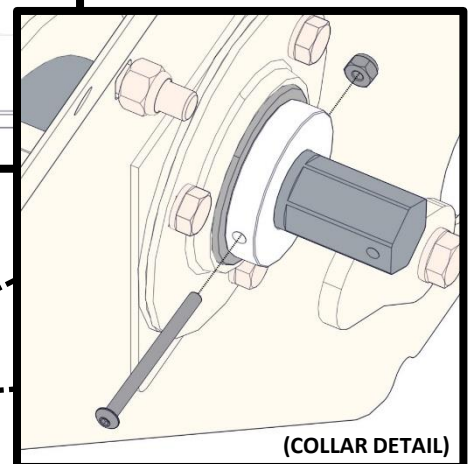
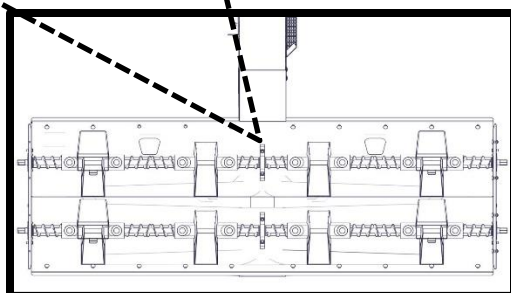


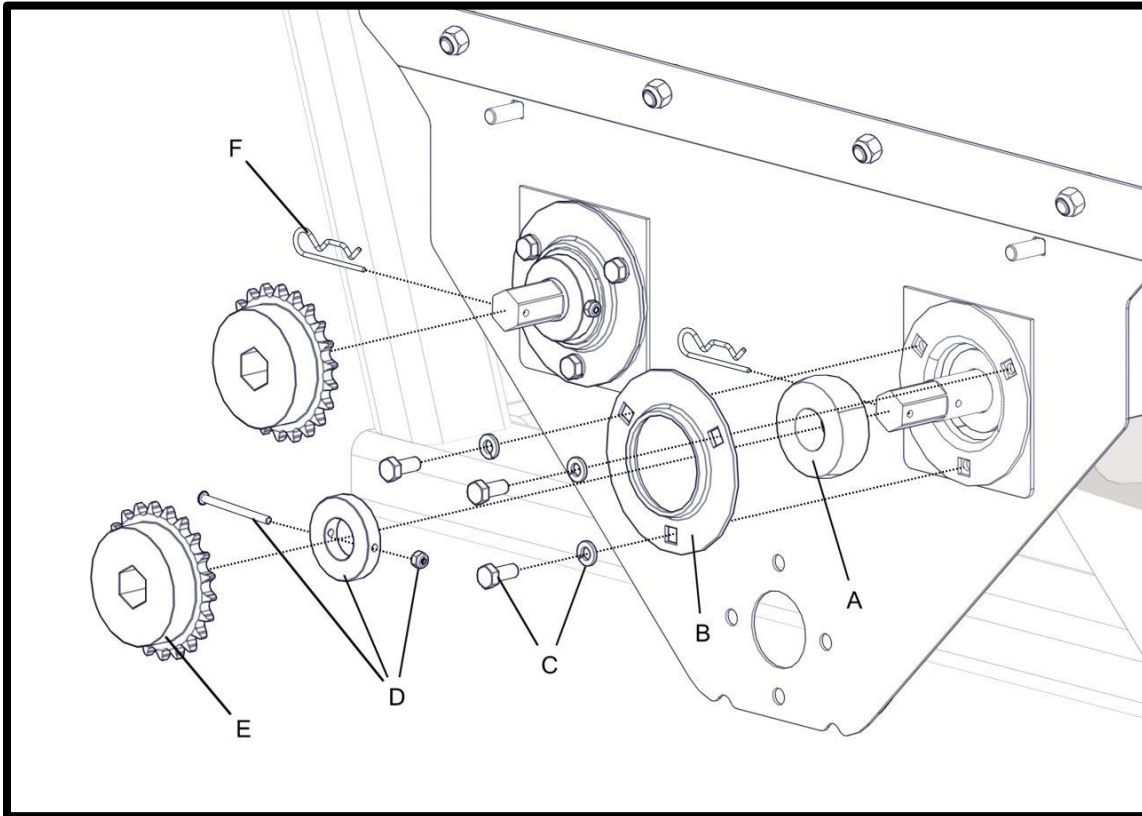
REMOVE BOLTS (A) AND WASHERS (B) FROM CENTER OF METER. INSERT CENTER SECTION BEARINGS (C). REPLACE BOLTS AND WASHERS. DO NOT OVERTIGHTEN.



PLACE LEFT AND RIGHT HALF-AUGERS IN THE METER. **THEY MUST BE ORIENTED AS SHOWN. NOTE THE DIRECTION OF THE FLIGHTING IN THE IMAGE TO THE LEFT.** THE LEFT AND RIGHT DESIGNATIONS ARE BASED ON THE REAR, OR FAN SIDE, OF THE METER.

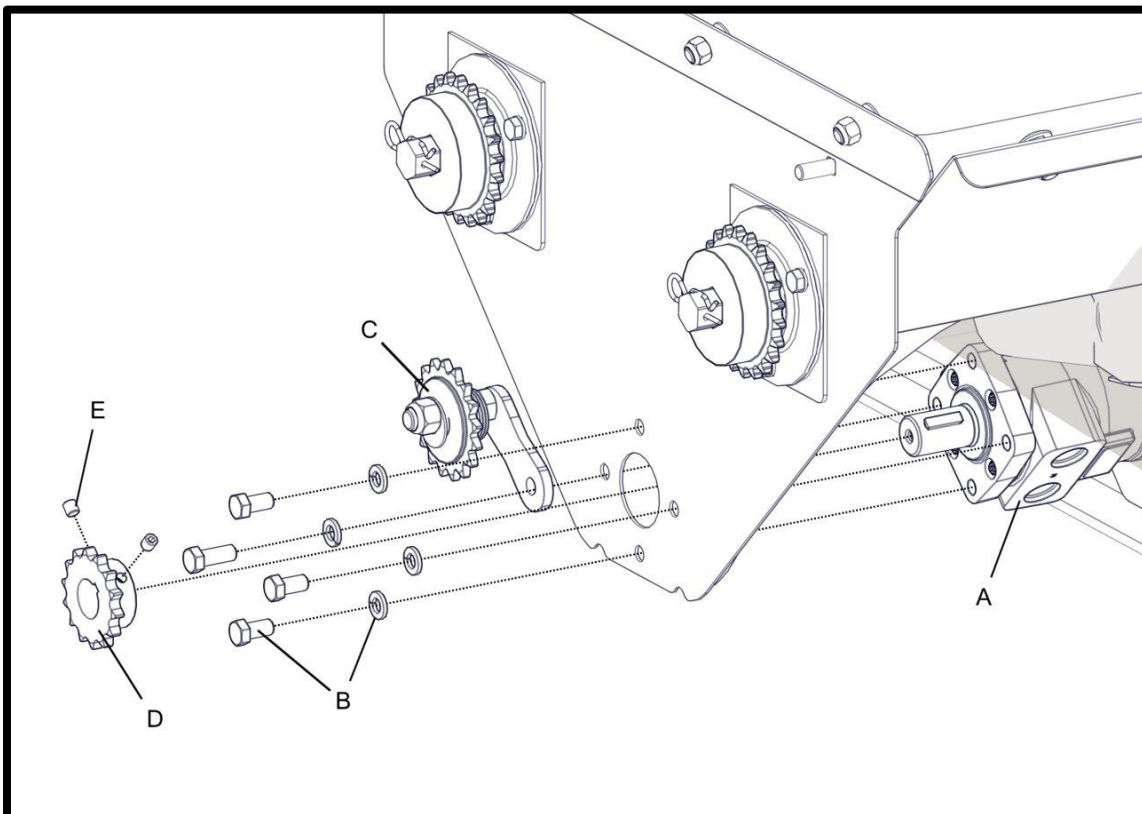
AUGERS MUST TURN FREE BY HAND.



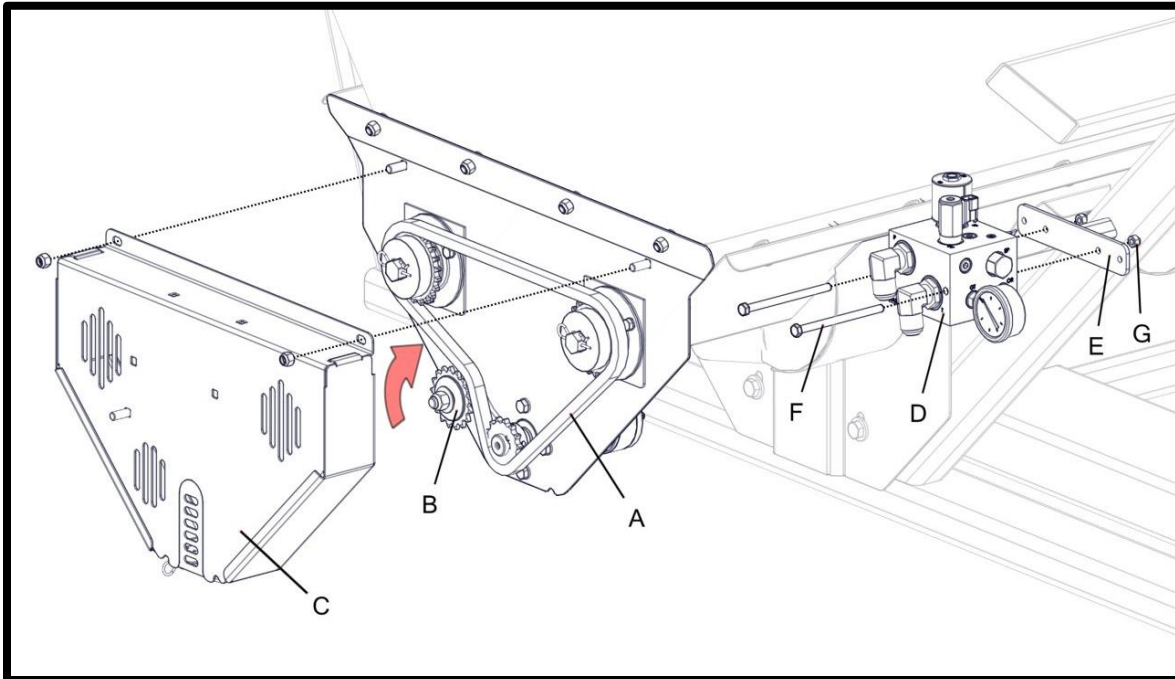


ON THE SIDE YOU REMOVED THE DRIVE COMPONENTS, REPLACE EACH ITEM IN THE REVERSE ORDER.

ON THE SIDE YOU ARE ADDING THE DRIVE TO, REPLACE THE BEARINGS **(A)**, THE BEARING FLANGES **(B)**, THE BEARING FLANGE HARDWARE **(C)**, AND COLLARS **(D)** (W/HARDWARE) **(D)**. PLACE SPROCKETS **(E)** ON THE ENDS OF THE AUGERS, AND SECURE THEM WITH PINS **(F)**.

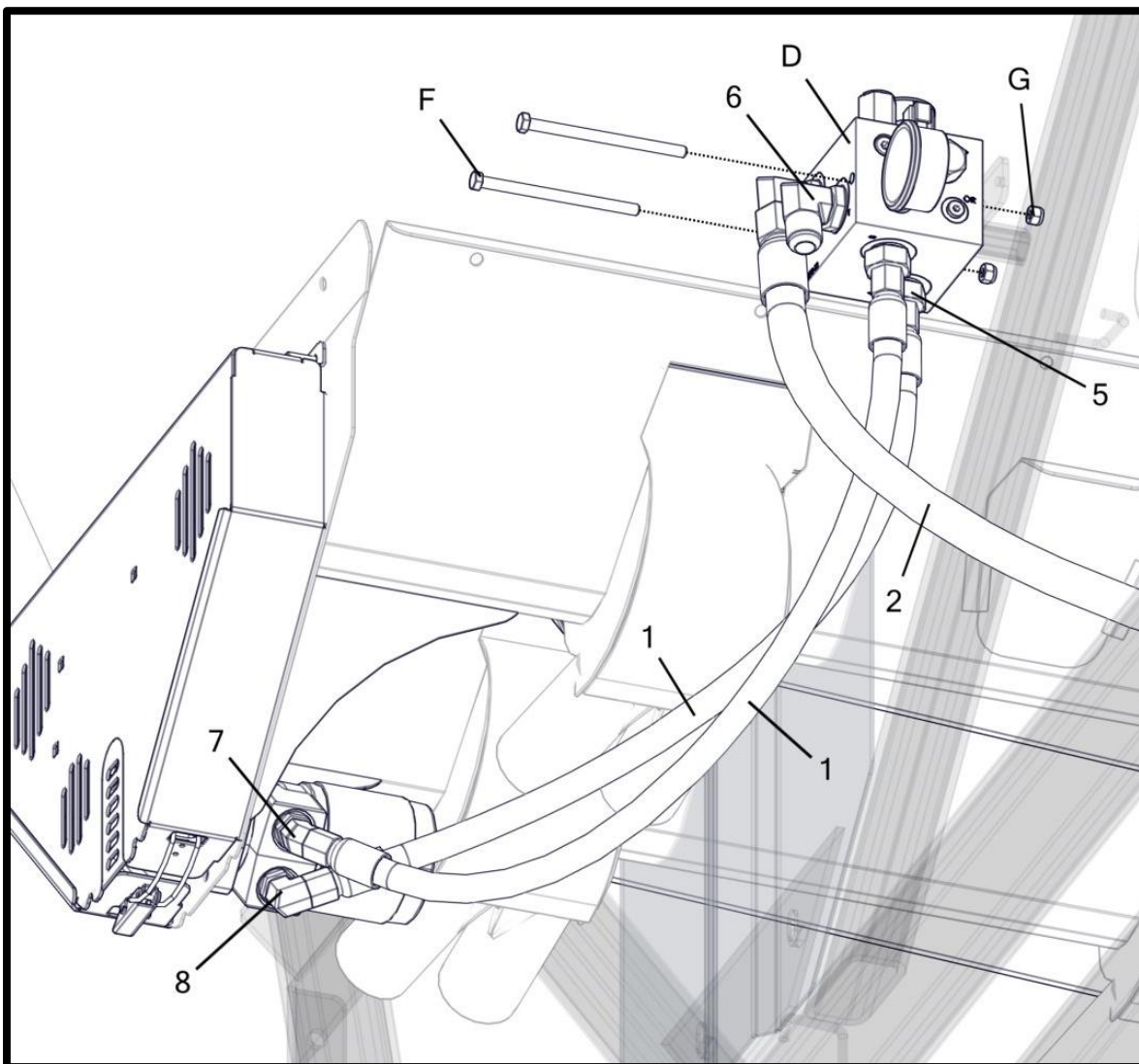


ADD MOTOR **(A)** IN THE ORIENTATION SHOWN. SECURE WITH MOTOR HARDWARE **(B)**. THE LONGER OF THE FOUR BOLTS SHOULD GO THROUGH THE CHAIN TENSIONER **(C)**. LEAVE THE TENSIONER LOOSE SO IT CAN BE ADJUSTED. PLACE SPROCKET **(D)** ON THE MOTOR SHAFT AND SECURE WITH SET SCREWS **(E)**.



PLACE CHAIN (A) ON SPROCKETS. PUSH TENSIONER (B) UP AGAINST CHAIN TO REMOVE MOST OF THE SLACK, AND FULLY TIGHTEN. CHECK SPROCKET ALIGNMENT. SHIM TENSIONER IF NEEDED. REPLACE COVER (C).

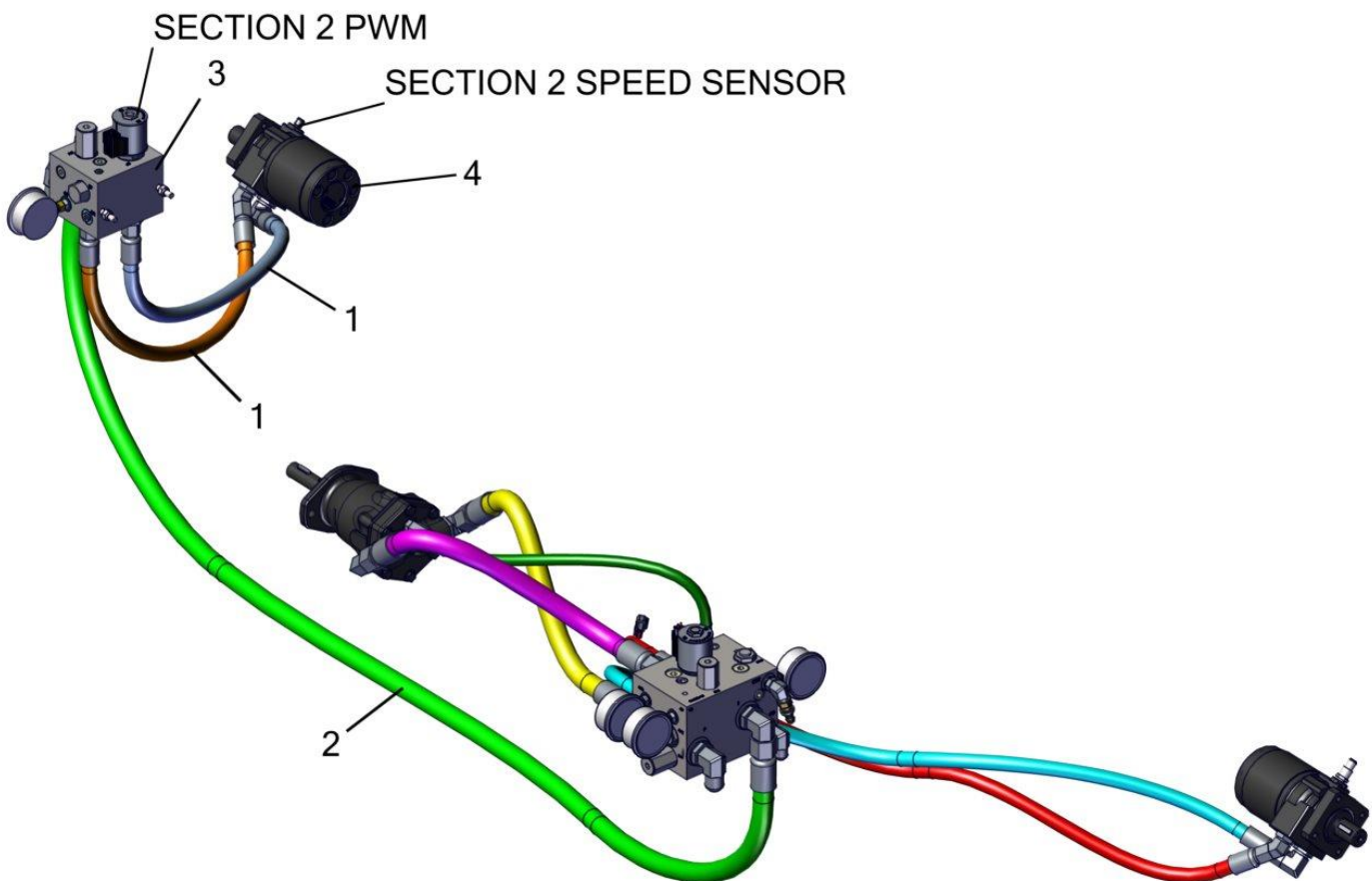
ATTACH HYDRAULIC VALVE (D) TO THE CRADLE ON THE BRACKET SHOWN (E), USING BOLTS (F) AND NUTS (G).



ATTACH HYDRAULIC HOSES AS SHOWN.

(HOSES AND FITTINGS SHOWN TO THE LEFT ARE IDENTIFIED ON PAGE 11.)

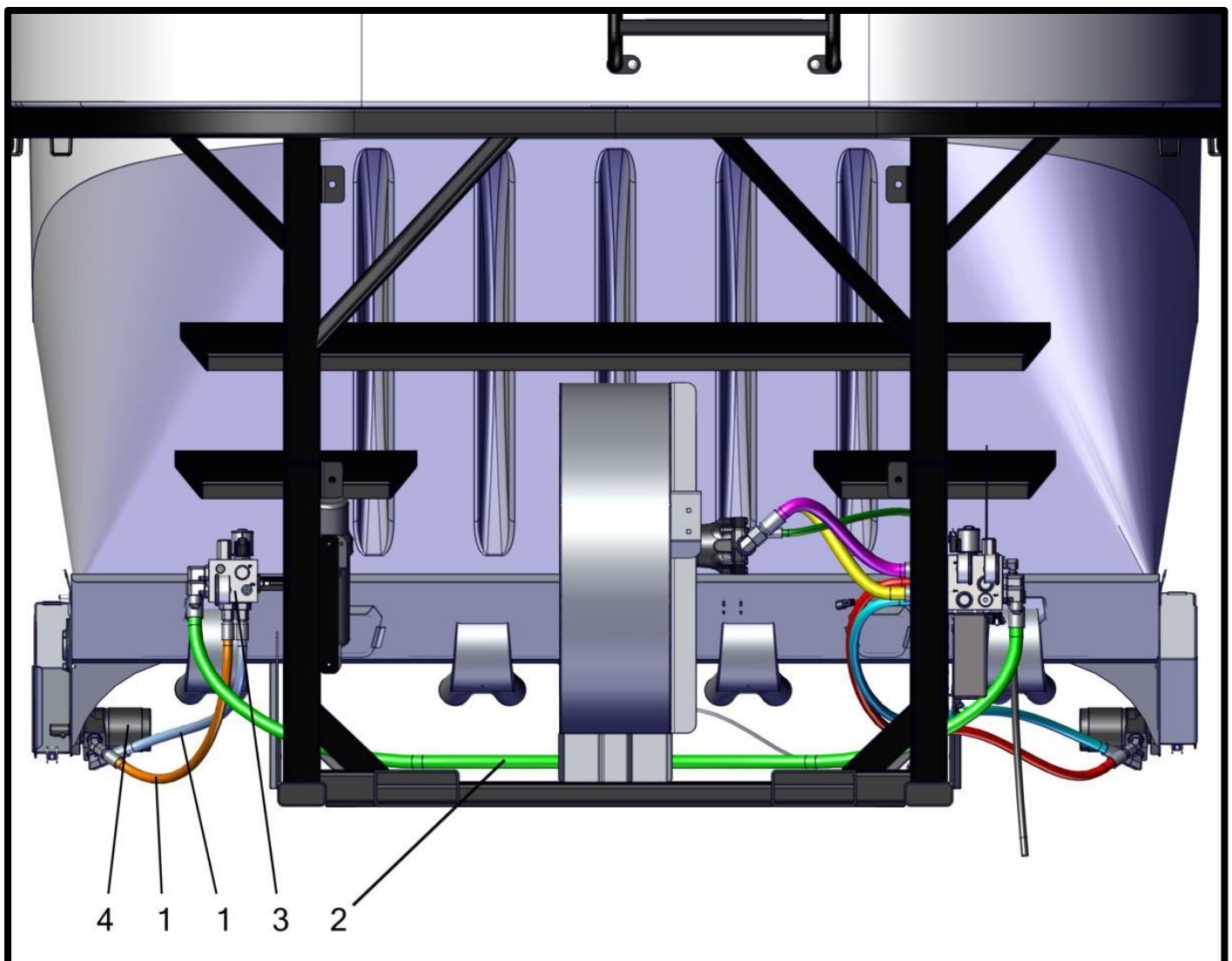
TWO SECTION HYDRAULIC HOSES AND MOTORS



INSTALL PWM2 AND SPEED SENSOR 2 HARNESS CONNECTIONS AS SHOWN.

TWO SECTION HYDRAULIC HOSES AND MOTORS

ITEM NO.	Qty	Part Number	Description
1	2	P003145	Hose - Hydraulic 1/2" x 36" (#8 F JIC x #8 F JIC)
2	1	P000715	Hose - Hydraulic 3/4" x 92" (#12 Female JIC Swivel x #12 Female JIC Swivel)
3	1	P000718	Valve - Electric Hydraulic Block Manifold (PWM Closed)
4	1	P003128	Motor - Hyd. 11.9 CuIn Gerotor w/ Speed Sensor (TE0195FS100FSAA)
5	2	P000384	Fitting - Hyd - #12 M O-Ring x M #8 JIC Straight
6	2	P000385	Fitting - Hyd - #12 M JIC x #12 M O-Ring Elbow 90
7	1	P003143	Fitting - Hyd - #10 M O-ring x #8 M JIC Elbow 45
8	1	P003144	Fitting - Hyd - #10 M O-ring x #8 M JIC Elbow 90 (6801-08-10-NWO)





Montag Manufacturing, Inc.
3816 461st Avenue
Emmetsburg, IA 50536
Phone: (712) 852-4572
FAX: (712) 852-4574

Tech Support: (712) 852-4572
or
support@montagmfg.com

Visit us at:
www.montagmfg.com